

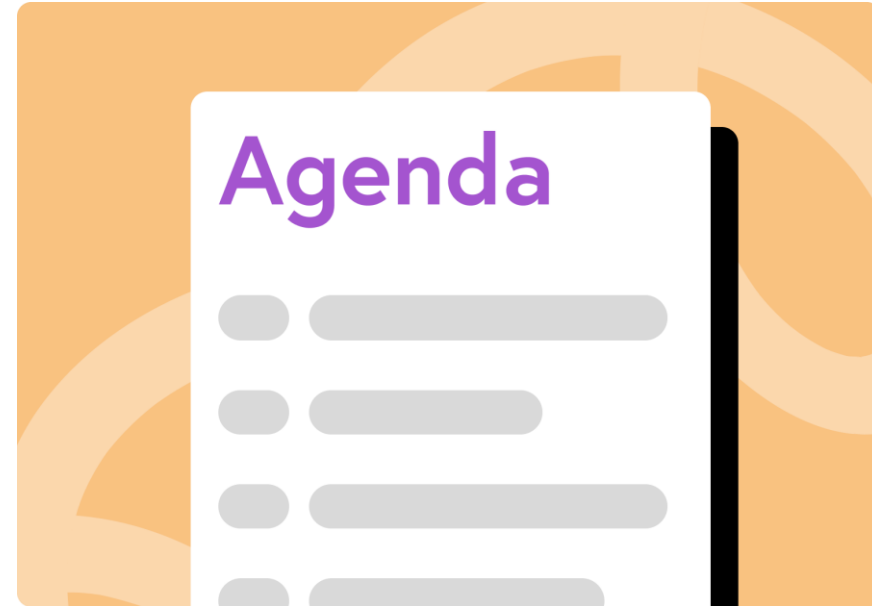


# Sustainability After September 30, 2024: Let's Talk About It!



# WELCOME

- Introductions
- Who's in the room?
- Purpose of this session
- Let's take a walk
- Title I reminders
- Data is key
- Next steps and Resources



# JENNIFER AND LEANNE



Jennifer Kottke, Director II  
Los Angeles County Office of Education  
Homeless Education Technical  
Assistance Lead

[Kottke\\_Jennifer@lacoed.edu](mailto:Kottke_Jennifer@lacoed.edu)



Leanne Wheeler, Consultant  
California Department of Education  
Integrated Student Services and  
Programs

[Lwheeler@cde.ca.gov](mailto:Lwheeler@cde.ca.gov)



# WHO ARE YOU?

- Name
- Title
- Location
- Number of homeless enrollment



# PURPOSE

- Participants will have the opportunity to **brainstorm ways to sustain your homeless education programs after September 30, 2024**. The session will provide a forum to discuss "out-of-the-box" strategy-building activities and various funding resources.
- We want you to **walk away with comprehensive ideas and strategies to sustain homeless education programs** in your agency.



# DEFINING SUSTAINABILITY

The ability to maintain at a certain rate or level!

The ability to maintain or support a process continuously over time!



# SUSTAINABILITY PLANNING: STEP-BY-STEP (1)

- First you want to **reflect on what you have accomplished** and **discussed the continuing need for your program**, it is time to begin your sustainability planning process.
- **Use these questions to assist** you with the next steps to prepare your Sustainability Plan for program services or activities.



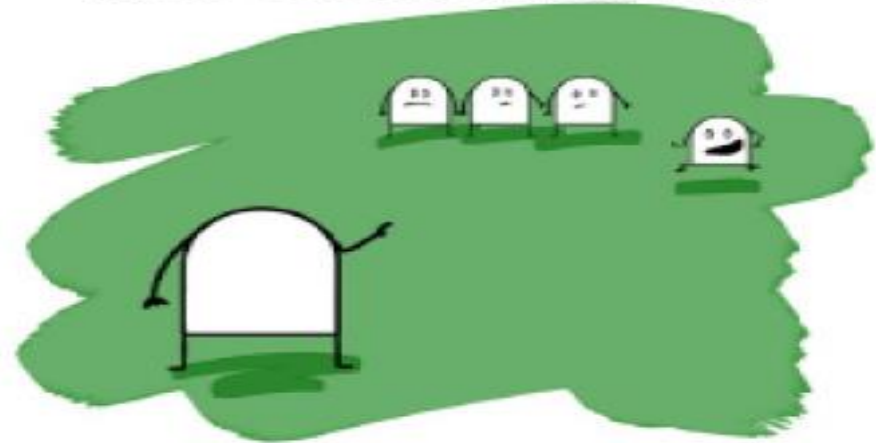
STEP 1

What will we continue to do?



STEP 2

Who do we need to move forward?



STEP 3

What is the cost?



STEP 4

What are our funding strategies?





# SUSTAINABILITY PLANNING: STEP-BY-STEP (3)

1. What will we **need to continue** to do?
2. Who do we **need to move forward** to accomplish those services?
3. What is the **cost**?
4. What is the **funding strategies**?
5. **Planning timeline** – what needs to happen between now and September 30, 2024?

These steps came from *Bringing the Future into Focus: A Step-by-Step Sustainability Planning Workbook* at

<https://www.ruralhealthinfo.org/sustainability/pdf/bringing-the-future-into-focus-sustainability-planning-workbook.pdf>



# TITLE I, PART A REMINDERS

- Homeless children are automatically eligible for Title I services, regardless of their current academic performance.
- LEAs must reserve funds, as necessary, to provide comparable services to homeless students regardless of their school of attendance including funding the local liaison position, and funding transportation to and from the school of origin.
- Due to the many and varied needs of students experiencing homelessness, the Title I, Part A services provided to these students may need to be greater in scope and intensity, and/or different in nature than those normally provided to non-homeless students.



# DATA IS ALWAYS KEY TO IMPLEMENTATION

- Programs should **collect and analyze data on their progress and achievements**, focusing on concrete outcomes and program impacts as it relates to homeless education.
- Robust data to **identify needs and show current program effectiveness** is essential for seeking funding from granting organizations, nonprofits, or businesses.
- One of the most essential components of successful solicitations is **providing information and data to potential funders** to make the case that their financial support is critical for implementing specific actions or interventions that will result in targeted (and measurable) changes.



# LET'S TAKE A WALK

- Gallery walk around the room and indicate how you plan on sustaining certain services
  - Funding – braiding, blending, and layering
  - Partnerships within your agency
  - Partnerships outside your agency
  - Resources

Let's Go  
For A Walk



# SUSTAINING VARIOUS SERVICES

- Transportation
- Tutoring
- Professional development
- Educational services
- Referrals
- Early Education
- Enrichment programs
- Case management
- Parent engagement
- Community partnerships
- Supplies and Technology
- Housing



# YOUR TURN TO PLAN

- Use the template to walk through Sustainability Planning

## ARP Sustainability Plan for Homeless Education

<b>DATE:</b>	
Step 1:	<b>What will you continue to do and why? What was the goal?</b>
Step 2:	<b>Who and what do you need to move forward?</b> <ul style="list-style-type: none"><li>• What does staffing look like?</li><li>• What supplies/resources will you need moving forward?</li><li>• Have you collected data?<ul style="list-style-type: none"><li>-If not, what is your plan to collect data?</li><li>-If you have, what does the data say? BE SPECIFIC</li></ul></li></ul>
Step 3:	<b>What is the cost?</b> <ul style="list-style-type: none"><li>• Monthly? Yearly?</li></ul>

Template in PADLET  
under RESOURCES  
MATERIALS:



Diving Deep Into Implementation

© 2024 CA Homeless Education Conference

# NEXT STEPS AND RESOURCES (1)...

QR Code from 2023  
California Homeless  
Education Conference's  
ARP-HCY Facilitation  
Session

*Ideas of services being offered*



# NEXT STEPS AND RESOURCES (2)...



- Create another Padlet for Sustainability with QR Code for 2024
  - Gallery Walk information
  - Contact information, optional



# NEXT STEPS AND RESOURCES (3)...

- National Center for Homeless Education Sustainability Guide: <https://nche.ed.gov/wp-content/uploads/2024/01/Sustainability-Guide.pdf>
- National Center for Homeless Education Sustainability Plan: <https://nche.ed.gov/arp-hcy/using-funds-for-sustainable-impact-a-guide-for-education-for-homeless-children-and-youth-programs/#:~:text=Click%20Here%20to%20Download%20the%20Sustainability%20Plan%20Tool%20Template>



# NEXT STEPS AND RESOURCES (4)...

- CDE's Title I Allowable Uses of Title I, Part A:  
<https://www.cde.ca.gov/sp/hs/cy/documents/allowableexpenses.docx>
- SchoolHouse Connection's ARP-HCY Sustainability:  
<https://schoolhouseconnection.org/wp-content/uploads/2024/03/ARP-HCY-Sustainability-nysed.pdf>



# REFLECTION, SHARE OUT & TAKE AWAYS

1. What program (s) are you trying to sustain?
2. Do you have data to show why it should be sustained? If not, what will you collect. If you do, what does the data say?
3. What is your sustainability plan?
  1. Who will you seek funding from?
  2. Who will you partner with?
  3. Is there a way the school/district/charter could incorporate this into other funding (LCAP, Community School, etc)?
4. How will you continue to monitor to ensure your students are being served well?





Thank you!



Diving Deep Into Implementation

© 2024 CA Homeless Education Conference