

# Fully Leverage Systemic Alliances With State/County/City/Community Partnerships To Amplify Services

Chino Valley Unified  
Latitude High School  
Placer County Office of Education



# Homeless Innovative Programs Grant

Education Program Consultants

Jacqueline  
Matranga

Heidi  
Brahms



- California Department of Education
- 20 Grantees
- Homeless Education
- School Years 2022–23 to 2023–24
- Model Innovative Practice Toolkits
- [hbrahms@cde.ca.gov](mailto:hbrahms@cde.ca.gov) (Program)
- [jmatranga@cde.ca.gov](mailto:jmatranga@cde.ca.gov) (Program)




Diving Deep Into Implementation

© 2024 CA Homeless Education Conference

# Twenty Innovative Homeless Programs

## HOMELESS INNOVATIVE PROGRAMS (HIP)

California Department of Education, Homeless Education Integrated Student Support and Programs Office



### BACKGROUND

A set-aside of the State Education Agency's allocation of the California's American Rescue Plan-Homeless Children and Youth (ARP-HCY) funds were used to fund twenty local education agencies (LEAs) through a competitive grant process and announced March 2022.

### PURPOSE

**Identify innovative practices previously implemented** and aligned with the provisions of the McKinney-Vento Homeless Assistance Act (Title 42 of the United States Code, Section 11431 et seq.)

**Improve and demonstrate to other LEAs** programs to strengthen the educational stability, access, support, and academic achievement of children and youth experiencing homelessness.

### HIP GRANTEEES

- 2 PreK-8 Elementary LEA
- 1 High School LEA
- 8 Unified LEAs
- 2 Charter High Schools
- 1 Charter TK-8
- 1 Charter 6-12
- 5 County Offices of Education

### DIGITAL TOOLKITS

Digital online Model Innovative Practice (MIP) topics include:

- Youth Engagement and Empowerment
- Tiered Systems and Referral Systems
- Building Interagency Connections
- Collaboration with Higher Education Interns, Social Workers, and Case Management Systems
- Internal Systems to Streamline Homeless Education Programs for Equity and Access.
- Building Equitable Supports through a Tiered System
- Tiny Homes and Housing Strategies
- Engagement Through Facilitated Discussions and Community Meetings

### QUESTIONS:

- Jacqueline Matranga  
[jmatranga@cde.ca.gov](mailto:jmatranga@cde.ca.gov)
- Heidi Brahms  
[hbrahms@cde.ca.gov](mailto:hbrahms@cde.ca.gov)
- CDE Homeless Education  
[HomelessEd@cde.ca.gov](mailto:HomelessEd@cde.ca.gov)

### SCAN QR CODE FOR MODEL INNOVATIVE PRACTICE (MIP) TOOLKITS





# CHINO VALLEY UNIFIED SCHOOL DISTRICT

## MCKINNEY-VENTO TOOLKIT & STRATEGIES

# Moving from Traditional Collaboratives to Building Systemic Alliances



Student Achievement • Safe Schools • Positive School Climate  
Humility • Civility • Service



# Example of a Model of Integrated Community Partnerships: Food Delivery

Delivery team members are familiar faces in the community. They know the families they serve too.

Every step along the way is centered in long-term relationships with families, building trust with them and walking alongside them in their need.

**HOPE Case Managers** identify students and families with food insecurity and work closely with God's Pantry to create/update client list for food orders.

Delivery team members relay wellness check information back to **case managers and HOPE team** indicating any changes in food or housing needs.

**God's Pantry** local nonprofit food pantry, prepares fresh meats and vegetable food bags for referred HOPE Program families.

**Verve City Church** has weekly delivery teams that pick up the food from God's Pantry and deliver to referred families homes and the HOPE office.



# MCKINNEY-VENTO TOOLKIT & STRATEGIES

## Moving From Traditional Collaboratives to Building Systematic Alliances

### The 5 module self-paced curriculum includes:

- Powerful student, parent, staff, and partner video stories
- 5 key components of successful McKinney-Vento strategies and implementation
- Audio narrated MP4 files, PDF presentation slides, and live links for easy reference
- Pre-Assessment, Reflection, and Evaluation sections to guide you in applying content
- Supplemental Resource Guide with tools and downloadable templates for your use

### TOOLKIT MODULES

Section 1: City &  
Community Partnerships

Section 2: Staffing & Case  
Management

Section 3: Funding &  
Resources

Section 4: Assessment,  
Tracking, & Reporting

Section 5: Outreach &  
Marketing

# CHINO VALLEY UNIFIED SCHOOL DISTRICT

## McKinney-Vento Toolkit & Strategies

Want to know more?  
Check out our Flipbook!

<https://heyzine.com/flip-book/6190722fb3.html>



## Contact Us



HOPEPROGRAM@CHINO.K12.CA.US



<https://www.chino.k12.ca.us/Page/15561>



(909) 628-1201 ext. 8960

SCAN  
ME



# Fully Leverage Systemic Alliances With State/County/City/Community Partnerships To Amplify Services

Latitude High School

Regina Kruglyak, Director of School Development

Rafael Castro. Physics Teacher







Creating Sustainable Solutions for Homelessness with Tiny Homes

**Purpose/Using this Resource:**

To encourage schools, NGOs, local governments, congregations, unsheltered groups themselves and other grass roots groups to feel comfortable to build more tiny house villages with and for unsheltered people.

Click on the images below to learn more


[www.sustainableolutionswithtinyhomes.weebly.com](http://www.sustainableolutionswithtinyhomes.weebly.com)

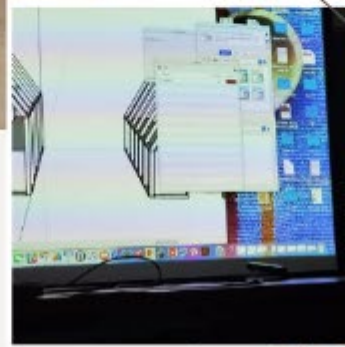


Creating Sustainable Solutions for Homelessness with Tiny Homes

BRINGING THIS TO YOUR CLASSROOM: Planning and worksheets for daily use



BRINGING THIS TO YOUR CLASSROOM:



Physics Handouts and Project curriculum

Humanities: Readings and Support Materials

**Purpose/Using this Resource:**

To encourage schools, PSEs, local government, congregations, and other groups to coordinate and contribute to building a better village with and for all around us.

Click on the images below to learn more



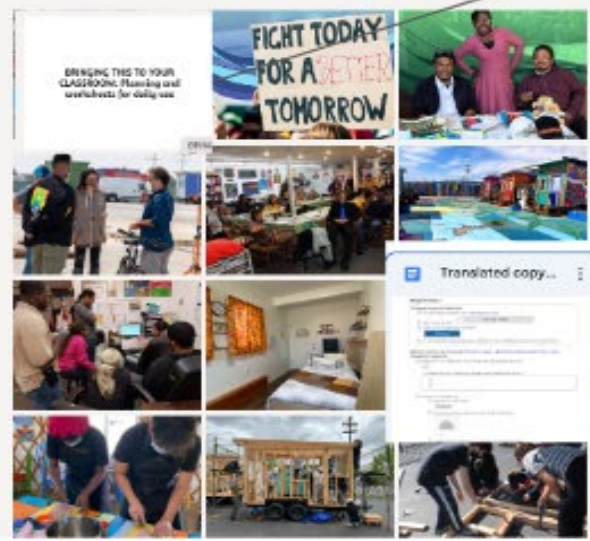


Creating Sustainable Solutions for Homelessness with Tiny Homes

**Purpose/Using this Resource:**

To encourage PRACTICE, local government, design groups, and behavioral scientists and other grass-roots groups to best contribute to build more tiny house villages with and for our most vulnerable.

Click on the images below to learn more



**SketchUp - Design Curriculum**





Creating Sustainable Solutions for Homelessness with Tiny Homes

**Purpose/Using this Resource:**

To encourage church, NGO, local government, congregations, universities, churches and other grass roots groups to be contributive to building tiny house villages with and for our most at-risk.

Click on the images below to learn more



Fundraising is a crucial step in bringing your dream of creating a tiny house village to life. In this comprehensive guide, we provide you with targeted strategies to successfully raise funds for your project. From crowdfunding to seeking sponsorships and engaging the community, these proven methods will empower you to secure the financial support needed to make your tiny house village a reality.

**Craft a Compelling Vision:** Begin your fundraising journey by crafting a compelling vision that captures the essence and impact of your tiny house village. Articulate how this community will transform lives, foster sustainability, and address housing challenges. A compelling narrative will inspire potential donors to join your cause.

**Engage the Community:** Involve the local community from the outset. Organize town hall meetings, outreach events, and informative sessions to share your vision with residents. Building a network of supporters who understand and champion your project will be invaluable in your fundraising efforts.

**Leverage Crowdfunding Platforms:** Utilize crowdfunding platforms specialized in housing and community development. Create a captivating campaign page that showcases your village's unique features, benefits, and potential social impact. Engage with supporters through updates, videos, and personalized rewards to encourage ongoing contributions.

1. Set a fundraising goal and create a GoFundMe, Kickstarter or Indiegogo campaign. Utilize media coverage and showcase building progress to create momentum and encourage donations.
2. Leverage gifts and pledges received to secure more donations. Name drop and showcase the support received to galvanize further support.
3. Be specific about where the funds will be allocated and what they will be used for to make it more appealing and actionable for potential donors.
4. Reach out to existing donors within your organization and ask for their support. Use their contributions to encourage others to donate as well.
5. Utilize media coverage to pitch the project and request donations around holidays.
6. Assign a point person to focus on securing larger news outlets to cover the project and attract more attention and potential donors.
7. Reach out to local congregations and religious organizations for support.

**Seek Corporate and Institutional Support:** Reach out to local businesses, corporations, and institutions that share your vision of sustainable housing solutions. Present personalized sponsorship proposals emphasizing the benefits of their involvement, such as positive community impact and branding opportunities.

**Apply for Housing and Community Grants:** Research and apply for grants from organizations and foundations that support affordable housing and sustainable community projects. Tailor your grant proposals to align with their objectives and demonstrate the positive outcomes of your tiny house...

Location  
Los Ang

Web site  
<https://>

Email Ad  
contact

Category  
Builds t

Name of  
NATION

Access to reality



# Placer County Office of Education – *Request for Assistance*

Fully Leverage Systemic Alliances with  
State/County/City/Community Partnerships to  
Amplify Services

Chris Dunbaugh, Program Manager

Cheryl Bryan, Student Support Practitioner





# REQUEST FOR ASSISTANCE

PCOE  
GOLD IN EDUCATION



Diving Deep Into Implementation

© 2024 CA Homeless Education Conference

# OVERVIEW

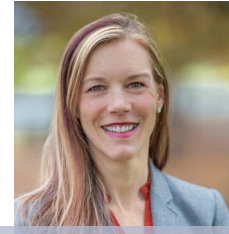
## FOSTER, HOMELESS, CSEC YOUTH SERVICES TEAM

Provides Educational Case Management for students in foster care; students and families experiencing homelessness, and students at risk of Commercial Sexual Exploitation

Works closely with Child Welfare social workers, housing agency case managers, Probation Officers and school district staff to support students' and families' educational, mental health, & social services needs

Provides consultation, training, and technical assistance on the rights and needs of these students to school districts, Child Welfare, Probation, community agencies, and other partners

Provides professional development on a variety of topics, including trauma-informed practices in schools, foster/homeless youth education rights, and best practices in supporting foster and homeless youth in schools



Alicia Rozum



Chris Dunbaugh



Ambrosia Cramer



Cheryl Bryan



GOLD IN EDUCATION

**Gayle Garbolino-Mojica**

County Superintendent of Schools

Diving Deep Into Implementation

© 2024 CA Homeless Education Conference

# FAMILY TRYING TO NAVIGATE SERVICES





# REQUEST FOR ASSISTANCE (RFA)

## What is the RFA Process?

The PCOE Request for Assistance (RFA) process is a quick, accessible way for school district staff to request support in accessing county and community resources for students and families with multiple complex needs.

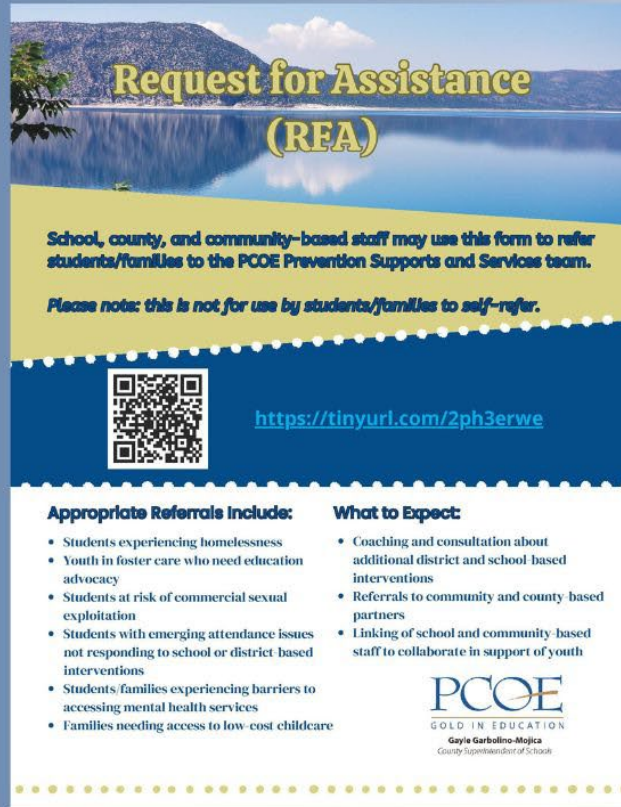
The RFA is also used by Placer County Children's System of Care and other community partners to quickly connect with school supports for students/families they are serving. Referrals come in through a simple Google form and are screened by a PCOE Prevention Supports and Services manager. Referrals are then assigned to a PCOE case manager who reaches out to the referring party and provides consultation, gathers more info, connects with family, and/or facilitates referrals.



# REQUEST FOR ASSISTANCE: FLYER

The flyer is provided to school and community-based staff for quick access to the RFA.


This current referral is *not* for student or family use. This flyer is provided to all Placer County school districts, County Child Welfare, Juvenile Probation, counseling centers, shelters, etc. for use by their staff.



**Request for Assistance (RFA)**

School, county, and community-based staff may use this form to refer students/families to the PCOE Prevention Supports and Services team.

*Please note: this is not for use by students/families to self-refer.*



<https://tinyurl.com/2ph3erwe>

**Appropriate Referrals Include:**

- Students experiencing homelessness
- Youth in foster care who need education advocacy
- Students at risk of commercial sexual exploitation
- Students with emerging attendance issues not responding to school or district-based interventions
- Students/families experiencing barriers to accessing mental health services
- Families needing access to low-cost childcare

**What to Expect:**

- Coaching and consultation about additional district and school based interventions
- Referrals to community and county-based partners
- Linking of school and community-based staff to collaborate in support of youth

**PCOE**  
GOLD IN EDUCATION  
Gayle Garbolino-Mojica  
County Superintendent of Schools



# Please take this survey now!

This survey asks about your experiences attending a California Homeless Innovative Practices (HIP) presentation.

Your feedback will help us understand the reach and usefulness of these presentations, as well as help inform future investments in Homeless Education Services at the CA State level.

Link:

[https://ucsf.co1.qualtrics.com/jfe/form/SV\\_6g5rWUxwEeOp9Do](https://ucsf.co1.qualtrics.com/jfe/form/SV_6g5rWUxwEeOp9Do)

QR code:



University of California  
San Francisco



# Fully Leverage Systemic Alliances With State/County/City/Community Partnerships To Amplify Services

THANK YOU

