



Stay Over Program

A program of Dolores Street Community Services in partnership with San Francisco Unified School District – Buena Vista Horace Mann Community School

and San Francisco Department of Homelessness & Supportive Housing



Welcome Presenters!

Laura Valdez, *Dolores Street Community Services*, Executive Director

Laura Valdéz has served as the Executive Director of Dolores Street Community for over 5 years. She was born and grew up in El Paso, Texas on the U.S./Mexico border. Her social justice framework is rooted in the struggles she witnessed growing up as a daughter of Mexican immigrants and queer Xicana. Laura brings over 20 years of leadership experience in nonprofit administration, public health, public policy, and grassroots organizing. As a human rights activist, she has led several social justice organizations including organizations working for immigrant and LGBTQ rights. As a National Urban Fellow, she earned a Master of Public Administration degree from Bernard M. Baruch College, School of Public Affairs in New York City and is a LeaderSpring Fellow alumni. Laura believes that long-term social change in this country requires sustained commitment and leadership from those most closely impacted by pervasive inequity and injustice.

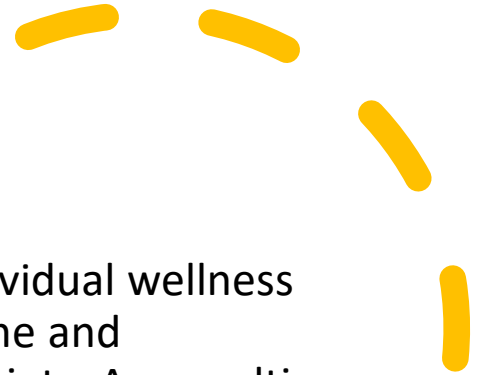


Manuel Pina, *Dolores Street Community Services*, Director of Housing and Shelter Programs

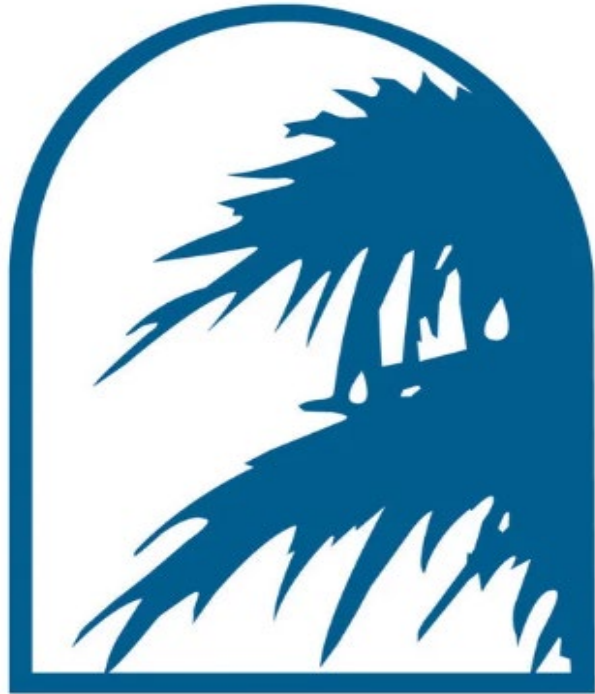
Manny has over 12 years of experience in Operations, mostly in private corporations. Manny holds a BS in Mechanical Engineering with a Masters in Logistics Management. He has a solid background in project management, systems, and processes operations. Manuel has developed a solid career in the operations field, working with large corporations such as Tesla and Amazon to name a couple. As an immigrant from Venezuela and understanding all the struggles our communities go through, Manny decided to jump out of corporate and practice something more meaningful for our society with the hope of bringing more smiles to those that need it the most.



About Dolores Street



Introduction



DSCS

Dolores Street Community Services nurtures individual wellness and cultivates collective power among low-income and immigrant communities to create a more just society. As a multi-issue, multi-strategy organization, we provide solutions to those who are most marginalized, including families, those living with HIV/AIDS, undocumented individuals, and most recently, transition-age youth. We work together to address homelessness, lack of affordable housing, and to support immigrant rights to meet the complex needs of our Mission and Latinx communities and collectively address the root causes of suffering and injustice.

Today, DSCS applies culturally appropriate and trauma-healing approaches in all 10 of their housing and shelter programs.



Diving Deep Into Implementation

© 2024 CA Homeless Education Conference

About BVHM K-8 Spanish Immersion School



We are BVHM, the Mission District's K-8 dual-language Spanish Immersion Community School, and as such we strive to develop strong bilingual and multicultural agents of change that can thrive academically, socially and artistically. Through academically rigorous instruction, technology, and the arts, our educators develop students' collaborative and critical thinking skills, preparing them for a dynamic world.

Inspired by the core values of our community and supported by an equity-focused and culturally relevant social-emotional curriculum, our children rise to our high expectations and bloom into healthy, competent, and confident learners. Finally, our visionary social justice lens allows students and their families to analyze our current social reality, empowering them to transform our community for the betterment of all.



DSCS

Diving Deep Into Implementation



© 2024 CA Homeless Education Conference



Department of Homelessness and Supportive Housing



The Department of Homelessness and Supportive Housing (HSH) launched on July 1, 2016. The department combines key homeless-serving programs and contracts from the Department of Public Health (DPH), the Human Services Agency (HSA), the Mayor's Office of Housing and Community Development (MOHCD), and the Department of Children Youth and Their Families (DCYF). This consolidated department has a singular focus on preventing and ending homelessness for people in San Francisco.

The Department of Homelessness and Supportive Housing strives to make homelessness in San Francisco **rare, brief, and one-time**, through the provision of **coordinated, compassionate, and high-quality** services.

The Department of Homelessness and Supportive Housing is built on the pillars of compassion, courage, and common sense—and strives to reflect these values in its work.



Diving Deep Into Implementation

Program Overview

WHO:	San Francisco Unified School District students and their families who are experiencing homelessness or housing insecurity.
WHAT:	Overnight emergency shelter for San Francisco Unified School District students and their families. Meals and Collaborative Case Management in partnership with school social workers is provided. SOP is housed out of the gym at BVHM Community School and operated by Dolores Street Community Services through HSH.
WHEN	School weekdays Monday to Friday the Stay Over Program operates 6pm to 7am. During weekends, holidays and school recess closures the Stay Over Program operates 24 hours.
WHERE	The Stay Over Program operates from the gymnasium at Buena Vista Horace Mann Community School in San Francisco's Mission District.
HOW	Families can self-refer, or referrals can be made by the City of San Francisco's Coordinated Entry System. school social workers or school staff or community-based organizations.



History of the Stay Over Program

In 2017, there were 64 families whose children were student of Beuna Vista Horace Mann K-8 Community School and lacked safe and stable housing.

BVHM leadership, the Department of Homelessness and Supportive Housing (HSH) and Dolores Street Community Services (DSCS) developed the Stay Over Program (SOP) in which one of BVHM's gyms was converted to an overnight family shelter to provide a safe place for families experiencing homeless or housing insecurity to sleep at night.

SOP was a response to:

- A) lack of emergency shelter for families with school aged children in SFUSD,
- B) barriers faced by Latinx and newcomer families in accessing the coordinated entry system.



This Photo by Unknown author is licensed under [CC BY-ND](#).

Stay Over Program Design

- Community School Framework– Rooted in the belief that schools can be resource hubs that can mitigate the effects of poverty by providing support to children and families to address basic needs such as housing.
- Collaborative Case management - School-based referrals are key linkage for connecting families to the SOP.
- The flexible model of the SOP can meet families where they are with linguistically and culturally affirming environment and services.
- The SOP model is to meet families where they are at and provide them with linguistically and culturally affirming services.



Stay Over Program Video



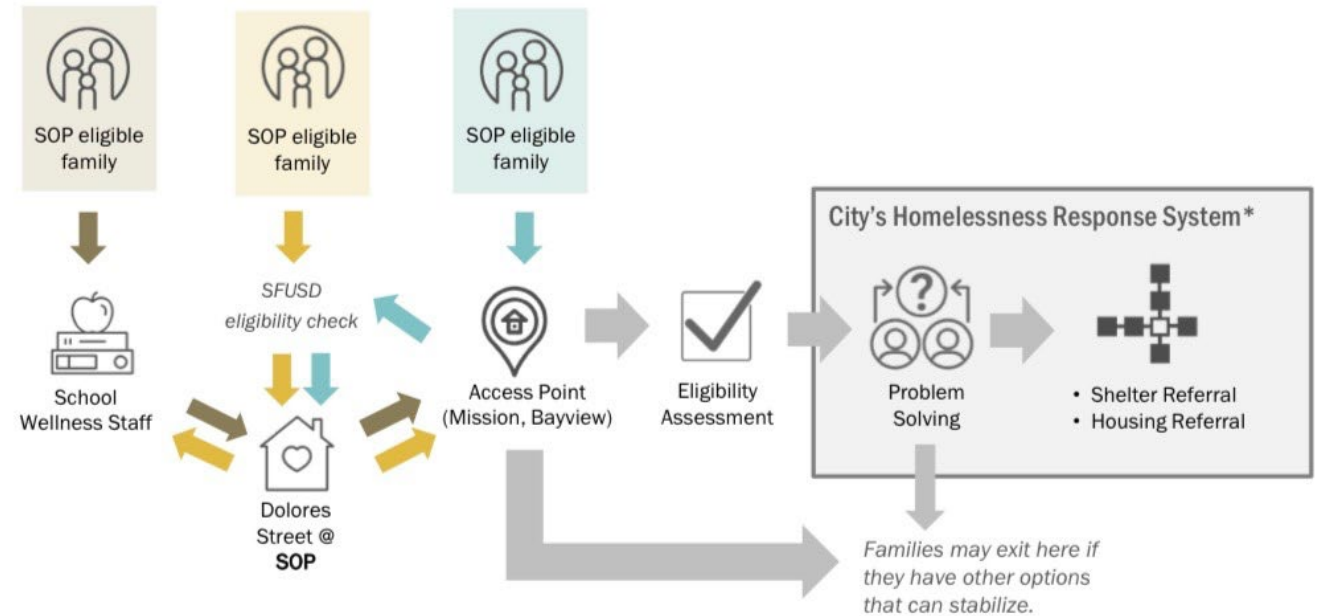
Diving Deep Into Implementation

© 2024 CA Homeless Education Conference



No "Wrong Door" provides multiple ways for an eligible family to connect to SOP and other services. Families can self-refer as well.

Each colored arrow represents one of three different pathways through which a SOP eligible family can connect to SOP to stay overnight and access the City's supportive services. In addition to providing multiple pathways into SOP, the current program workflow also enables key communication streams between stakeholders to collaborate and support families.



* The Homelessness Response System describes the overall system of services to address homelessness managed by HSH.

Collaborative Case Management

SOP families are connected to Access Point Case Managers to identify the family need and connect them to appropriate services and programming.



Home to School Support

The Stay Over program provides tutoring and learning enrichment. Staff work with families and school staff to ensure that the shelter environment is complimentary to their learning and development: either a quiet sleep space, increased attendance, medical attention or wellness supplies.



Social Services Support

Case Manager works with Family to navigate and apply to social services: Health insurance (Medi-Cal) CalFresh And other resources like Public Transportation, Food distribution, Clothes, Job Centers etc. .



Immigration Assistance

Immigration support is needed to apply for asylum or other adjustments to immigration status, DSCS provides free immigration services.

Adjusting immigration status is the key as it provides for legal authorization to work in the country.



Collaborative Case Management

Case Managers work with the families to explore barriers to housing and housing opportunities available. The Case managers work closely with School social workers to support the child's emotional and developmental wellbeing during their stay.



Community Partnerships

Strengthening Family Support: Leveraging Community Partnerships in the Stay Over Program

Friends of San Francisco Schools

- Warmly welcomes SOP families, providing tutoring, ESL activities, art and craft sessions, nutritious lunches, and outdoor activities to support their holistic well-being and educational enrichment.

Give Again Organization

- Generously supplies SOP families with laundry soap to support their household needs. Additionally, they provide individual cereal boxes, ensuring nutritious breakfast options are readily available for each family member.

Reality SF Church

- Engages a volunteer run program that provides a warm breakfast and morning Drop-In Center which includes play and learning activities for pre-school aged children.

Quaker Community Church

- Graciously hosts enriching activities for families and children every Sunday, promoting community bonding and cultural engagement within the SOP program.

BVHM Teachers and Staff

- Generously provide materials such as books and worksheets to enhance the educational experience of SOP participants.

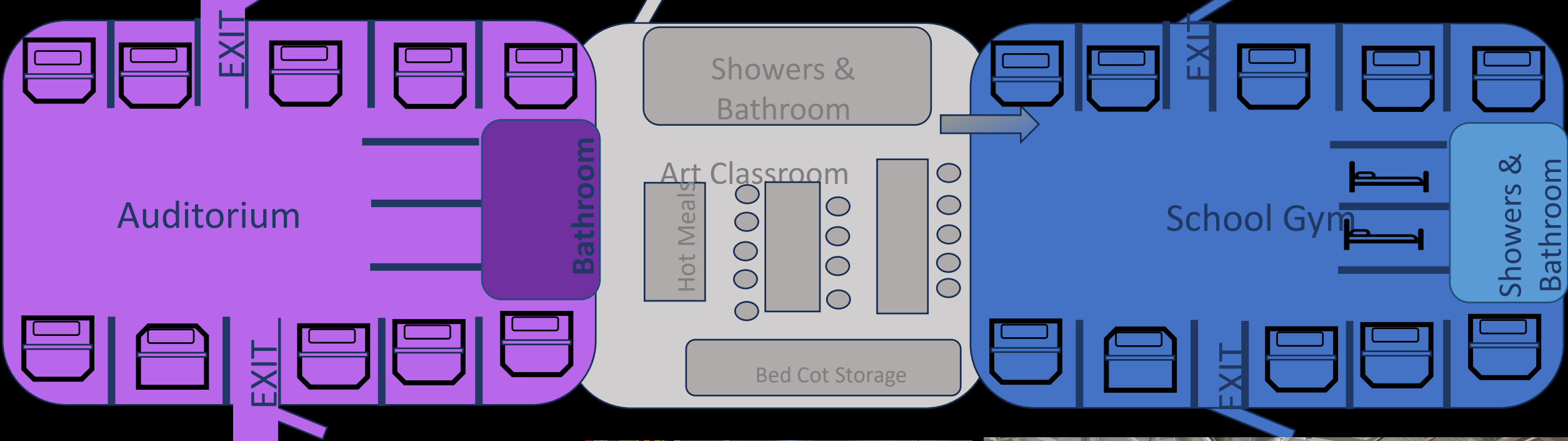
Urban Angels

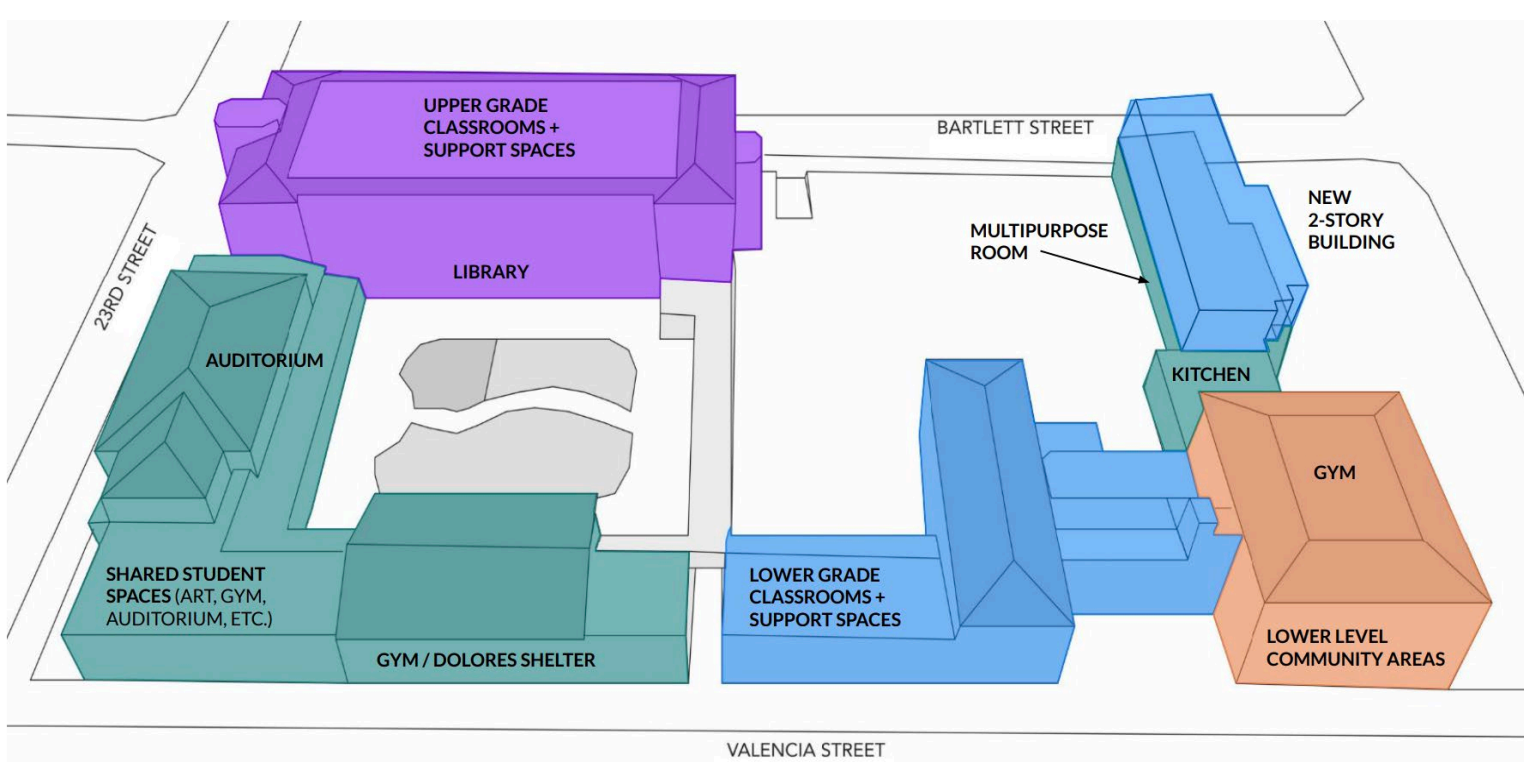
- Happily supply SOP with backpacks, jackets, financial support for student recognition, and a variety of other essentials, including clothing, whenever needed.



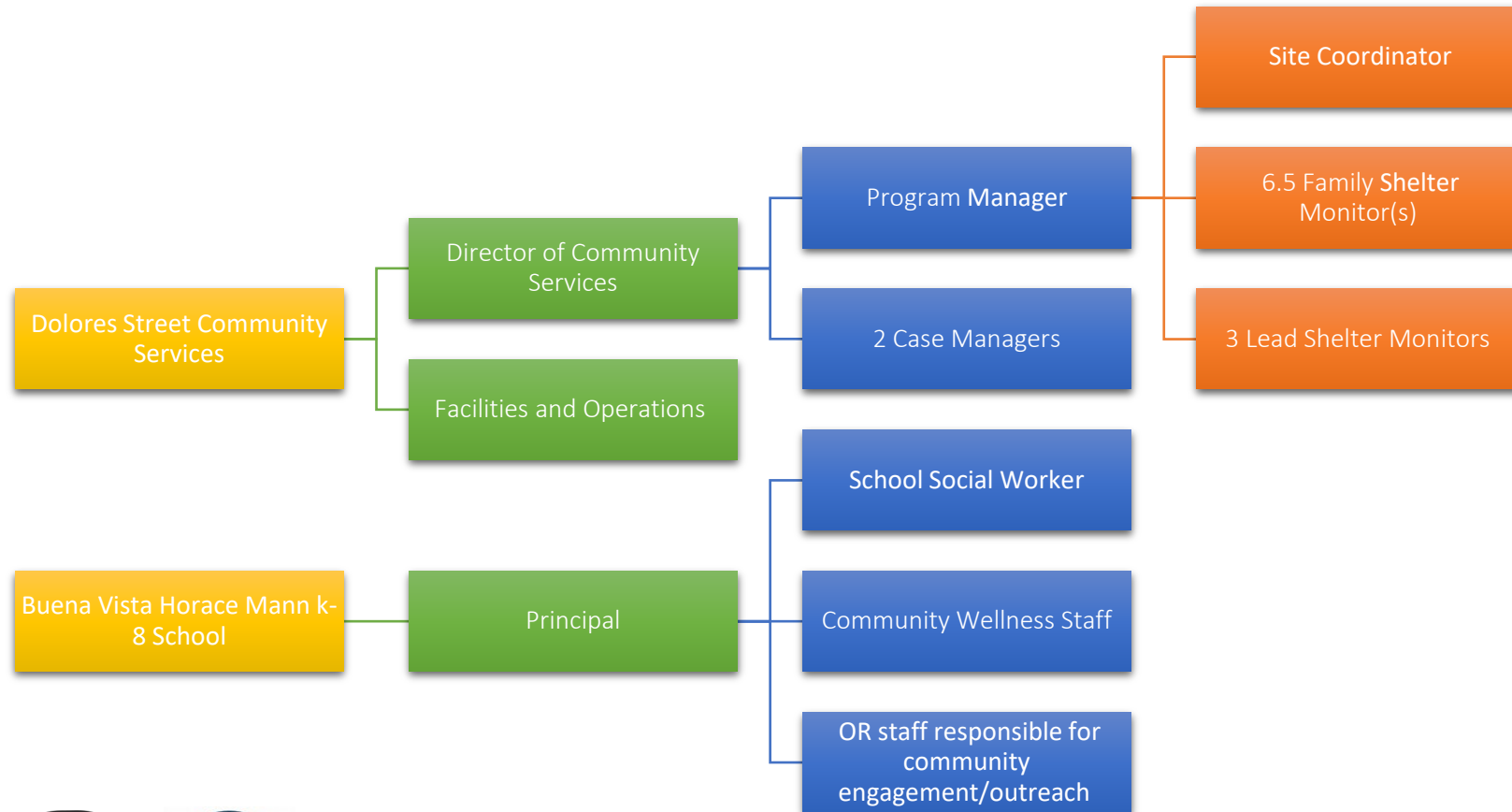
Diving Deep Into Implementation

© 2024 CA Homeless Education Conference





Program Staffing



SOP Expenses Outline - Average cost per bed/night \$72.

Stay Over Program's budget for FY23-24 is \$1.8mil to operate a 69-bed capacity shelter. This includes Staffing, meals, and all program expenses.



Program Outcomes

Collaborative Case Management

Buena Vista Horace Mann Community School and Dolores Street Community Services deliver comprehensive collaborative case management and family support services to students and their families centering family wellbeing, stability and student success.

1,349 people | 417 families served

Since its inception in November 2018, the Stay Over Program has served 1,326 from 87 schools of the 132 schools in the district.

No time limit on stays

The absence of a time limit on shelter stays facilitates a more conducive environment for families to stabilize and access resources, ultimately leading to a higher rate of successful transitions to secure housing. The average stay for a family at the stay over program is 12 weeks.

93 Families with a total of 418 adults, infants, children, and youth moved into permanent housing

The Stay Over Program has historically provided families with the needed support and barrier removal aiding in the transition from the family shelter to permanent housing. Latinx families account for 45% of unhoused families, yet the Latinx community is only 15% of the city's population. Additionally, they receive lower rates of housing placement. Latinx unhoused families only account for 21% of the families housed within San Francisco.

\$72 per bed per night

The cost per night is more cost-effective than other family shelters in the city because the SFUSD provides the school gymnasium as an in-kind facility for the operations of the family shelter. In cities with a high cost of living like San Francisco, this is a significant cost savings and it provides community access in neighborhoods with the highest rates of family homelessness.



Questions

Please scan the QR code or
visit StayOverProgram.com/questions.

[Form Presentation](#)



Questions

Please scan the QR code or visit StayOverProgram.com/questions.

[Form Presentation](#)



Summary of Key Takeaways

1. Program Overview:

- The Stay Over Program offers emergency shelter for SFUSD students and their families.
- It aims to address homelessness by offering a safe and supportive environment for participants to stabilize and transition to permanent housing.

2. Key Implementation Stakeholders:

- The success of the program relies on collaboration including the city Department of Homelessness and other govt agencies, SFUSD, and DSCS.
- Each stakeholder plays a crucial role in contributing resources, expertise, and support to ensure the program's effectiveness.



Summary of Key Takeaways

3. Resource Allocation:

- The program's budget includes allocations for essential services, such as meals, shelter, and case management.
- The SOP is funded at an annual operating budget of \$1.8 mil through funding from San Francisco Department of Homelessness and Supportive Housing, the program's budget includes funding for essential services, meals, and case management.

4. Replication Timeline and Tools:

- The program's budget includes allocations for essential services, such as meals, shelter, counseling, and case management.
- Funds are sourced from the city budget, with specific line items designated for various program components, including meals, ensuring adequate support for participants.
- System and services may be structured differently in your community than in the city of San Francisco, therefore the model would be tailored to the specific community that seeks to replicate the SOP. Likewise, funding could be structured differently through city, county, state or philanthropic funding. Additionally, the alliance between county and school district may differ depending on the structure of providing supportive services to families in need.

5. Community Collaborations and Family Support Services Model:

- Community collaborations are essential for the program's success, fostering partnerships with local organizations, businesses, and volunteers to enhance support services and resources.
- The program's family support services model emphasizes the importance of addressing the unique needs of families experiencing homelessness, providing tailored assistance and resources to promote stability and reunification.

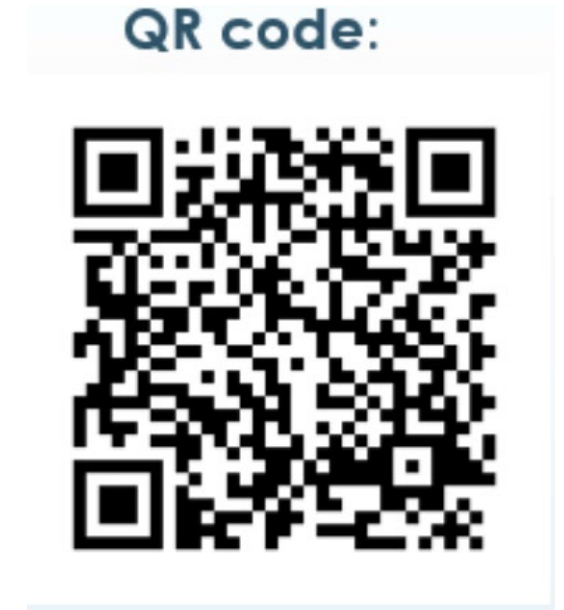


Virtual Tour

Thank you for joining us today!

For any questions, explore our SOP toolkit for replication and complete the presentation evaluation using the QR code.

We're here to help make a difference in addressing homelessness and housing insecurity for students and families in your community.



Diving Deep Into Implementation

© 2024 CA Homeless Education Conference

