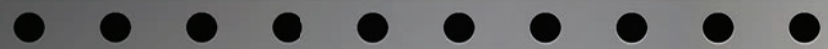




Working one-on-one with customers and design teams, Kalispel Metal Products provides individualized service that is hard to find in larger fabrication shops. From one-of-a-kind art pieces to custom trailers, no project is too large or too small!





CRAFTSMANSHIP WITH CULTURE

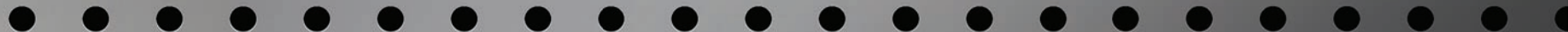
We've been in the metal business since the mid-1970s

Kalispel Metal Products is an all-encompassing sheet metal fabrication shop located in Cusick, Washington. With our hand forging capabilities, CNC machines and years of expansive sheet metal fabrication knowledge, we can create everything from one-of-a-kind art pieces to full custom trailers quicker and more efficiently than ever.

Kalispel Metal Products is proudly owned and operated by the Kalispel Tribe of Indians. As a Tribe that is so rich in heritage, our traditions have taught us that cultural pride and working together continues the advancement of our people. Kalispel Metal Products is just one of the many businesses that provides economic stability to our people and surrounding communities.



HISTORY





FIRE PITS & BBQS

There's no better way to enjoy a night outside than gathered with friends and family around a crackling fire sharing stories, smiles and s'mores. Our hand-crafted fire pits are the perfect centerpiece for many a memorable summer night.





OCTAGON FIRE PIT WITH
SPARK SCREEN & FEET



PANELS CAN BE
CUSTOMIZED

FEATURES

- Hand-welded steel
- Quality craftsmanship
- Proven engineering
- Unique designs
- Completely customizable
- Wood-burning and propane-burning options



PARK STYLE BBQ GRILL

CUSTOM

QUALITY

WOOD-BURNING PEDESTAL FIRE PIT



PROPANE PEDESTAL FIRE PIT

OCTAGON FIRE RING



CUSTOM
ARTWORK
HERE

OCTAGON
FIRE RING WITH
BBQ GRATE



Visit our website to view all the items we offer and get current pricing and custom quotes, specs, sizes and more!

KALISPELMETALPRODUCTS.COM



**NO DETAIL
OVERLOOKED.**

BENCHES & PICNIC TABLES

Sit down and stay a while. Whether you're outfitting a city park or a park-like backyard, our benches and picnic tables are the perfect pieces to help you enjoy the great outdoors. The beautiful designs and quality craftsmanship will enhance any setting.



CHILDREN'S
PARK BENCH

CUSTOM
ARTWORK
HERE

PARK BENCH WITH BACK

FEATURES

- Quality craftsmanship
- Proven engineering
- Continuous $\frac{3}{16}$ " steel CNC cut plate
- $1\frac{1}{2}$ " schedule 40 pipe
- Features flanges to easily bolt down

STURDY

**POWDER COATING
COLOR OPTIONS**
CUSTOM COLORS ARE
AVAILABLE UPON REQUEST







FEATURES

- Unique designs
- Continuous $\frac{3}{16}$ " steel CNC cut plate
- $1\frac{1}{2}$ " schedule 40 pipe
- Features flanges to easily bolt down



CLASSIC

Visit our website to view all the items we offer and get current pricing and custom quotes, specs, sizes and more!

KALISPELMETALPRODUCTS.COM

OUTDOOR SPECIALTY PRODUCTS

SITE OR TRAIL MARKERS



CUSTOM
ARTWORK
HERE

FEATURES

- ¼" steel
- Can be customized with your specific details and logo

STEEL WASTE
RECEPTACLE

CUSTOM
ARTWORK
HERE

FEATURES

- Hand-welded 14 guage steel
- 2" square tubing
- perfect for campgrounds,
parks and municipalities
- holds a 42 gallon waste can
- locking hinged door
- variety of powder coat
colors available



KALISPELMETALPRODUCTS.COM

Visit our website to view all the items
we offer and get current pricing and
custom quotes, specs, sizes and more!

CUSTOM PROJECTS

We've put our skills to work for some of the region's top dining, hospitality and government organizations. But that's just the beginning. We're ready to bring our craft, passion and expertise to your next project, big or small.

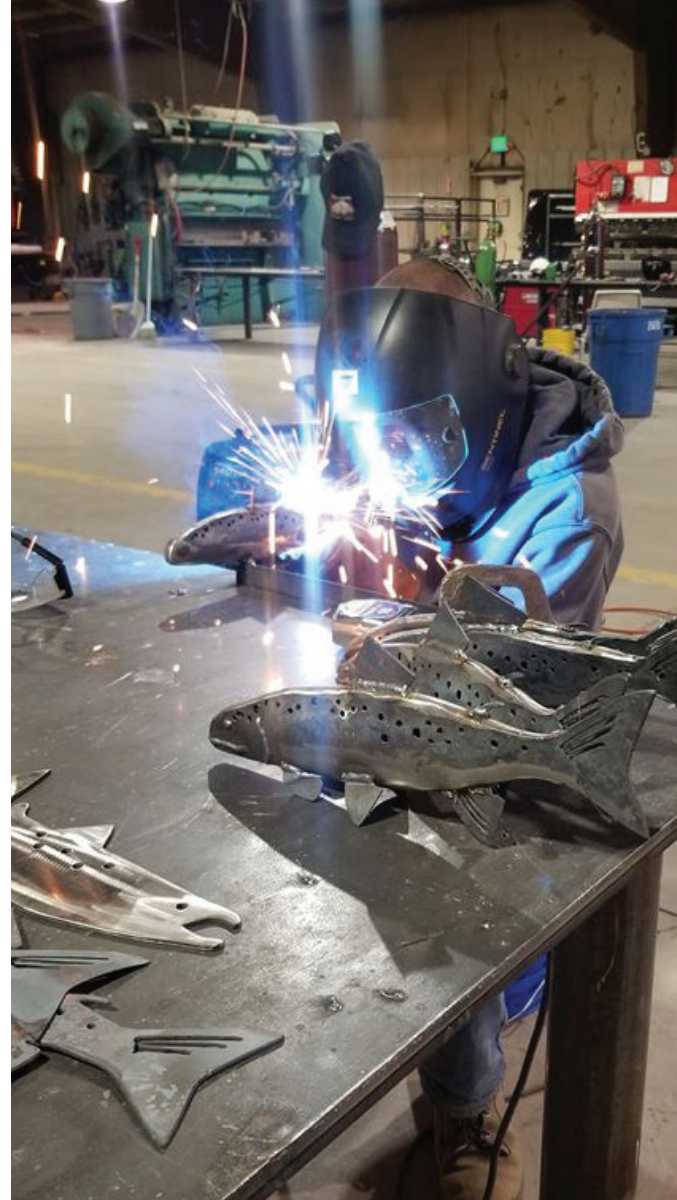
"We have been extremely impressed with the designs, creativity and quality of work from Kalispel Metal Products. They have custom-fabricated many eye-catching pieces that help us provide a premiere experience and promote our brand."

BOB CASTLE

GENERAL MANAGER

KALISPEL GOLF AND COUNTRY CLUB







KALISPEL CASE LINE

“The Original” aluminum gun, rifle and bow cases, handcrafted in Cusick, Washington and constructed from .080 thick marine-grade aluminum. Our cases feature secure latches and hinges with a wrap-around seal to keep dust and moisture out.



Visit @KalispelCaseLine
on Facebook and Instagram
to see more photos of our cases





**HALI-ARC WELDS FOR
STRENGTH AND SECURITY**
(Not fused like most competitors)

**ALL CASES MADE FROM .080
MARINE-GRADE ALUMINUM**

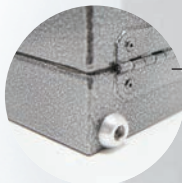
**MILITARY SPEC
HARDWARE**

**STAINLESS STEEL
PADLOCK ACCESSORY**

**STAINLESS STEEL
LOCKING ROD
ASSEMBLY**



CLOSED RIVETS

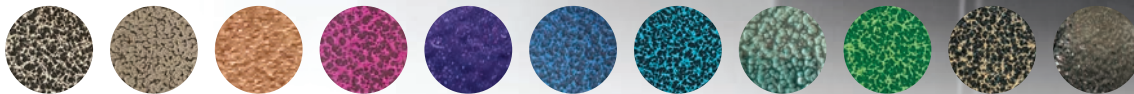


**ALUMINUM
MILLED FEET**

**FULL-LENGTH
STAKED HINGE
EVERY 4" FOR
SECURITY**



**POWDER COATING
COLOR OPTIONS**



TO ORDER

509.447.7440

KALISPELCASELINE.NET



BEYOND JUST METAL PRODUCTS.

Kalispel Metal Products and Kalispel Case Line are dedicated to continuing the advancement of Kalispel Tribal Members through workforce development, and at the heart of these two enterprises is the Kalispel Career Training Center.



Kalispel Career Training Center is central to the Kalispel Tribe's workforce development initiative that serves Kalispel Tribal members and residents of neighboring communities near Cusick, WA. Profits from Kalispel Metal Products and Kalispel Case Line fund the training center, which breaks down the barriers to employment and economic equality that is often seen on tribal lands and in surrounding communities. Career development and job creation provide equity access to employment opportunities and reduce the number of unemployed, low-income residents of the Kalispel Reservation and its neighboring communities.

The goal is not simply job training, but job creation. Authorized by Tribal Resolution No. 2016-39, the Kalispel Tribe's Sustainable Workforce Enhancement Initiative represents the implementation phase of a community-oriented effort to reduce the employment disparity between Native and non-Native community members on and near Tribal Lands.

Barriers to employment and economic equality within this community are seen in a lack of industry-specific, on-the-job training programs on or near Tribal lands. Kalispel Career Training Center is the only industry-specific training program currently providing industry standard training in construction. In partnership with the Carpenters Employers Training Trust Fund, a full curriculum of pre-apprentice standards in carpentry has been created at Kalispel Career Training Center.



KALISPEL CAREER
TRAINING CENTER

KALISPEL CAREER TRAINING CENTER

In August of 2018, the Kalispel Tribal Council authorized Kalispel Resolution 2018-71, which expanded the Sustainable Workforce Enhancement Initiative of 2016 to include Kalispel Metal Products as a partner program of Kalispel Career Training Center. It allowed the creation of apprenticeships in welding and fabrication. Kalispel Metal Products employs certified welders who work with welding apprentices from Kalispel Career Training Center on welding and custom fabrication products, as well as Kalispel Case Line aluminum gun cases. Products are sold to Tribal Departments as well as to private entities. The income from these services and/or products is used to support pre-apprenticeship programs at Kalispel Career Training Center.



KALISPEL CAREER
TRAINING CENTER

CAMASPATH.ORG/CAREER-TRAINING





Visit [@KalispelMetalProducts](#)
on Facebook and Instagram to
see more photos of our work and
learn how we can create custom
metal art for your project.