



From Insight to Impact: Implementing Compassionate Systems Awareness in Homeless Education Programs





Session Objectives

Share Compassionate System Framework & Introduce a Variety of Tools

- Check In
- Ways We Show
- Stock & Flow
- Iceberg
- Closing

Application to Individual & Groups



CONVENE THE COMMUNITY GROUNDING MEDITATION

GROWING COMPASSIONATE
SYSTEMS CHANGE THROUGH THE
**CULTIVATION OF SYSTEMS
AWARENESS,**

HELPING PEOPLE REORIENT AND
CHOOSE A DIFFERENT WAY OF
SHOWING UP

AND BEING IN RELATIONSHIP
WITH THEMSELVES, OTHER
PEOPLE, AND THE WORLD.



CHECK IN

Journal + Connect

Grounding- allows us to settle, transition, make space for new learning

Check in - with ourselves and others, helps us be present

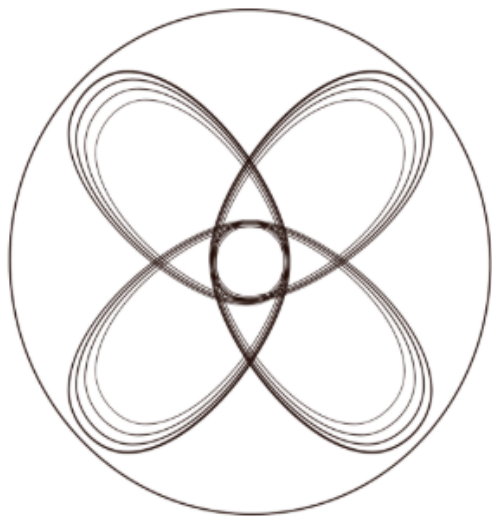
What's moving inside you? What does feel like, look like, sound like?

Connection helps us build community

School Tools and Timers


03:00





Growing compassionate systems change through the **cultivation of systems awareness**, helping people reorient and choose a different way of **showing up and being in relationship** with themselves, other people, and the world.

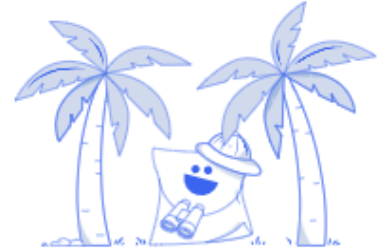
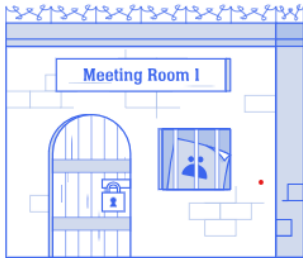


A decorative graphic on the left side of the slide, consisting of a network of light blue lines and small circles, resembling a circuit board or a neural network, extending from the top to the bottom of the frame.

**TO CULTIVATE COMPASSION IS TO BE
ABLE TO UNDERSTAND AND
APPRECIATE THE SYSTEMIC FORCES
AND LIVED EXPERIENCES THAT
INFLUENCE PEOPLE'S FEELINGS AND
ACTIONS.**

**THE WORD COMPASSION LITERALLY
MEANS 'STANDING WITH THE
EXPERIENCE (AND ESPECIALLY THE
SUFFERING) OF THE OTHER.'**

WAYS WE SHOW UP

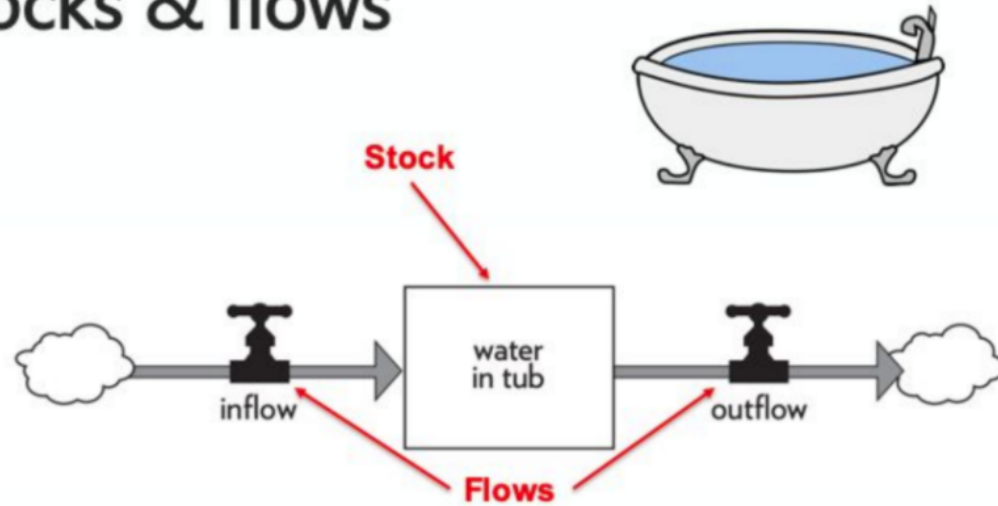




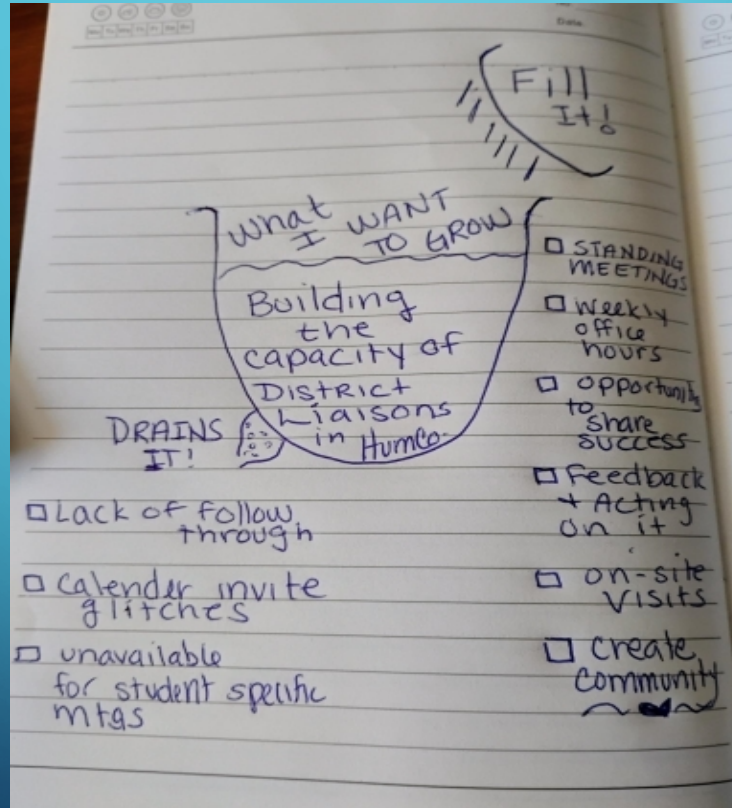
ANOTHER QUICK JOURNAL WRITE
REFLECTING ON THE WAYS WE SHOW UP
And how are you showing up ?

STOCK AND FLOW

Stocks & flows

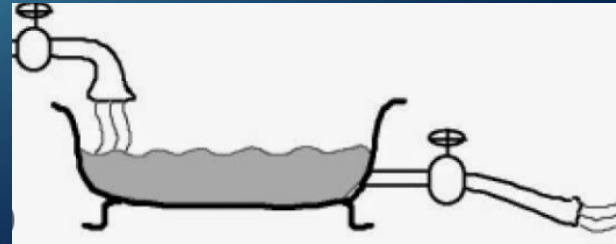


In Practice



YOU'RE TURN WHAT DO YOU WANT TO GROW?

- What fills and replenished it?
- What depletes and drains it?





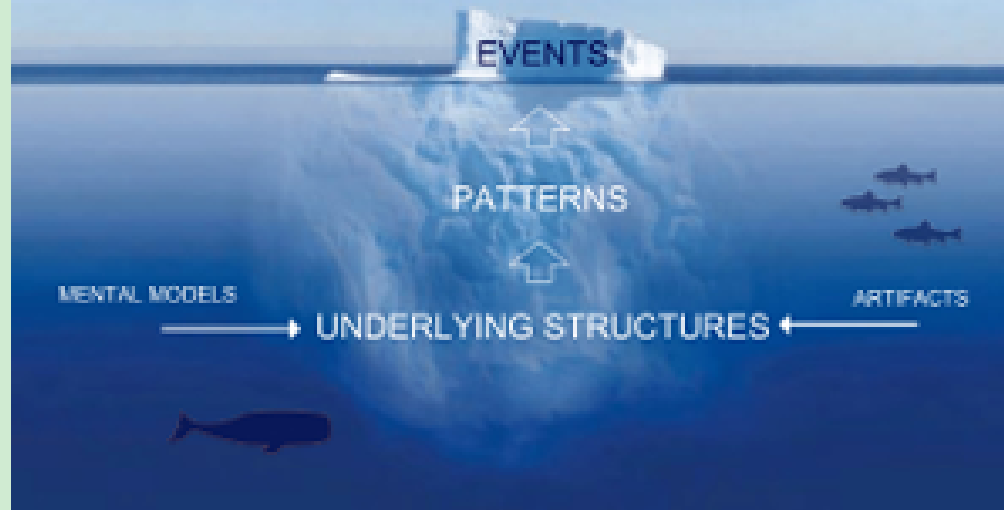
With your table mates - take 5 minutes to share

A decorative graphic on the left side of the slide consisting of a network of light blue lines and small circles, resembling a circuit board or a neural network, extending from the top to the bottom of the frame.

Intention - Tools - Practice

- **Systems Thinking with Heart:** Integrates traditional systems thinking with emotional intelligence and compassion, helping individuals understand how their actions affect the whole and how the whole affects them.
- **Self and Collective Awareness:** Cultivates personal reflection, empathy, and a deep understanding of interconnectedness—within oneself, in relationships, and across communities or organizations.
- **Transformative Practice:** Encourages meaningful change by fostering environments where people feel seen, valued, and empowered to co-create solutions to complex challenges.

THE SYSTEMS THINKING ICEBERG



We use the Iceberg metaphor to gain a better understanding of the underlying health of a system. The Iceberg is a systems thinking and systems sensing tool that helps us appreciate the co-existence of the cognitive or “thinking” parts of a system, the structures and artifacts that shape it, as well as the feelings and emotions within that system.



Topic / Event:

**Youth
Experiencing
Housing
Insecurity Have
a Higher Rate of
Chronic
Absenteeism**

SYSTEMS THINKING ICEBERG

DISRUPTIONS

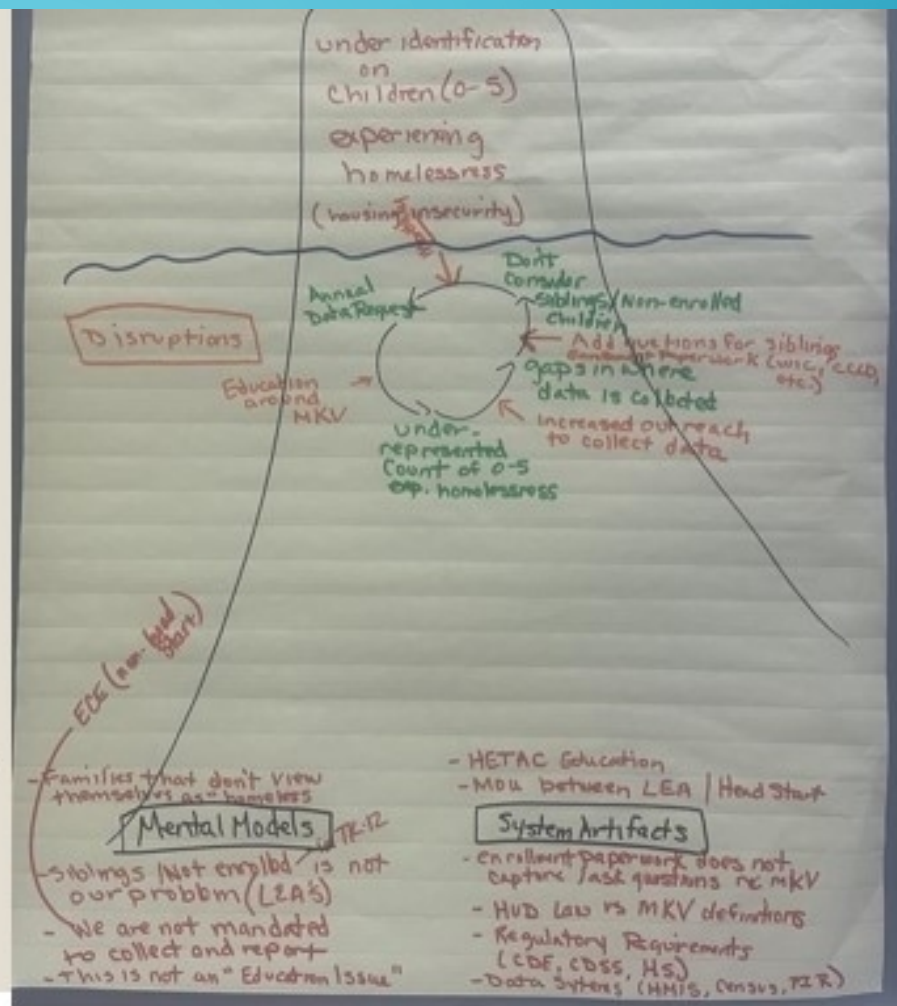
- Annual data request
- Education around MKV
- Underrepresented count of 0-5 experiencing homelessness
- Increased outreach to collect data
- Siblings aren't considered/non-enrolled siblings
- Add questions for siblings in enrollment paperwork (WIC, CCLD, etc). Gaps where data is collected.

MENTAL MODELS

- Families that do not view themselves as "homeless"
- Siblings not enrolled in tk-12 is not our problem (LEA's)
- We are not mandated to collect and report
- This is not an "education issue"
- ECE (non-head start)

SYSTEM ARTIFACTS

- HETAC Education
- MOU between LEA/HeadStart
- Enrollment paperwork does not capture/ask questions regarding MKV
- HUD law vs. MKV definitions
- Regulatory requirements (CDE, CDSS, HS)
- Data systems (HMIS, Census, PIR)



① Iceberg

↑
← MOVE →
OWNING A HOME

Others
Name

PATTERN / Behavioral
Dynamics

grounded - hearing - organized
↓ ↓ ↓

HABITS

- Mental
- Choices
- Actions
-
-

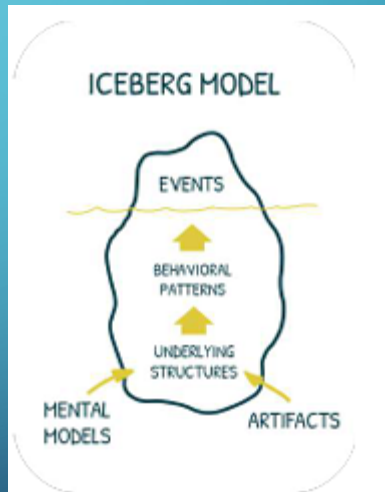
— underlying —
/- safety - / compromise
/- creativity /

ACTS

- Ethical
- Positive
- Rigid
-

Applicable to work — security
— confrontation of
— works
— basic needs
—
—

Cathi's Story Utilizing the Iceberg Model to identify the fears of becoming Homeless





CLOSING CIRCLE

SINGLE WORD FOR WHERE THEY ARE

PRESENTERS



CATHI NYE, MA
COORDINATOR

HOMELESS EDUCATION PROGRAM
VENTURA COUNTY OFFICE OF EDUCATION

CNYE@VCOE.ORG
805.437.1559



LEAH LAMATTINA
COORDINATOR

HOMELESS EDUCATION PROGRAM
HUMBOLDT COUNTY OFFICE OF EDUCATION

LLAMATTINA@HCOE.ORG
707.440.9511



RESOURCES

CENTER FOR SYSTEMS AWARENESS
[HTTPS://SYSTEMSAWARENESS.ORG/](https://systemsawareness.org/)

HOW WE SHOW UP
MARCH 2021
[HTTPS://SYSTEMSAWARENESS.ORG/
/#REPORTS](https://systemsawareness.org/#reports)

TOWARDS A METHODOLOGY FOR LIVING SYSTEMS CHANGE
FEBRUARY 2025
[HTTPS://SYSTEMSAWARENESS.ORG/RESOURCES/#REPORTS](https://systemsawareness.org/resources/#reports)

TEN YEARS OF TRANSFORMING
EDUCATION SYSTEMS FOR HUMAN FLOURISHING
APRIL 2025
[HTTPS://SYSTEMSAWARENESS.ORG/RESOURCES/#REPORTS](https://systemsawareness.org/resources/#reports)