

ENDO2022

JUNE 11–14, 2022 ATLANTA, GEORGIA AND ONLINE

PROGRAM AND MEETING GUIDE

[ENDOCRINE.ORG/ENDO2022](https://endocrine.org/endo2022)

ENDOCRINE
SOCIETY 



WELCOME TO ENDO 2022

On behalf of our planning committee and the entire Endocrine Society, welcome to ENDO 2022! We are thrilled to welcome you back to our first in-person meeting in years. This year, we have strived to develop a scientific program that will expand your knowledge and spark innovation, while also providing an ideal venue for you to network with your colleagues and foster new relationships. This year's program brings more than 4,500 attendees from all over the globe. Our world-class faculty are ready for transformative conversations with significant implications for scientific investigation and clinical practice.

Over the next few days, we encourage you to take advantage of all that ENDO 2022 has to offer. Attend a session both within and outside your research and/or specialty area. Engage in at least one of the many available receptions. Visit ENDOExpo to meet the exhibitors and poster presenters who want to share their science with you. Explore Atlanta with friends and colleagues.

We hope you will leave ENDO with knowledge and ideas that will impact your lab or practice once you return home, as well as have some fun while you are here. We cannot wait to hear about your experiences and hope you enjoy ENDO 2022!



**STEPHEN R. HAMMES,
MD, PHD**
Annual Meeting Chair
University of Rochester



**SCOTT MICHAEL
DEHM, PHD**
Basic Science Chair
University of Minnesota



**LAUREN MICHELLE
FISHBEIN, MD, PHD**
Clinical Science Chair
University of Colorado



**BULENT OKAN
YILDIZ, MD**
Annual Meeting Steering
Committee
Clinical Practice Chair
Hacettepe University



ENDO 2022 CONTRIBUTORS

Carol H. Wysham, MD
 Andrew Jacob Bauer, MD
 Ernesto Bernal-Mizrachi, MD
 Antonio C Bianco, MD, PhD
 Kristien Boelaert, MD
 Massimiliano Caprio, MD, PhD
 Barbara Gisella Carranza Leon, MD
 Bart Lyman Clarke, MD
 Carolyn L Cummins, PhD
 Dawn Belt Davis, MD, PhD
 Marie B Demay, MD
 Daniel Anthony Dumesic, MD
 Stephanie Anne Fish, MD

Aime T Franco, PhD
 Matthew Freeby, MD
 Daniel E Frigo, PhD
 Adda Grimberg, MD
 Rana Gupta, PhD
 Aylin Carla Hanyaloglu, PhD
 Niki Karavitaki, MSc PhD FRCP
 Marta Korbonits, MD, PhD
 Stephane A Laporte, PhD
 Monica M Laronda, PhD
 Maria Veronica Mericq, MD
 Nicola Napoli, MD, PhD
 Kendall W Nettles, PhD

Gabrielle Page-Wilson, MD
 Robin Patrick Peeters, MD, PhD
 Margareta Danuta Pisarska, MD
 Inez Rogatsky, PhD
 Philipp E Scherer, PhD
 Jennifer Lynn Sherr, MD, PhD
 Jennifer Sipos, MD
 Marc J Tetel, PhD
 Robert Alan Wermers, MD
 Selma Feldman Witchel, MD
 Maria-Christina Zennaro, MD, PhD
 Chandna Vasandani, PhD FLARE Intern

TABLE OF CONTENTS

2	GENERAL INFORMATION	8	POSTER SESSIONS	26	PRODUCT THEATERS
3	ACCREDITATION AND CLAIMING CREDITS	10	AWARDS SCHEDULE	27	ENDOEXPO EXHIBITOR LIST
4	BASIC SCIENCE PATHWAYS	14	SCHEDULE AT A GLANCE	28	ENDOEXPO FLOOR PLAN
6	ABSTRACT SESSIONS	24	PROGRAM AND EVENTS	30	GEORGIA WORLD CONGRESS CENTER FLOOR PLANS

GENERAL INFORMATION

ABSTRACTS

ENDO 2022 abstracts are freely accessible online at any Digital Poster Pods and on the ENDO 2022 Meeting App. Abstracts will also be published online as a supplement to the June 2022 issue of the *Journal of the Endocrine Society* (JES). Unless otherwise noted, all Rapid Fire, Poster Plus and On Demand poster abstracts presented at ENDO 2022 are embargoed until 10 AM EDT on Saturday, June 11. For oral presentations, the abstracts are embargoed until 8 AM EDT on the date of presentation. The Endocrine Society reserves the right to lift the embargo on specific abstracts that are selected for promotion prior to or during ENDO 2022.

ENDOEXPO

SATURDAY, JUNE 11
9:30 AM–4:00 PM EDT

SUNDAY-MONDAY, JUNE 12–13
9:00 AM–4:00 PM EDT

ENDO 2022 will feature an in-person expo with organizations in the endocrine space showcasing their latest products, services, and innovations. This year's ENDOExpo will be located live in the Georgia World Congress Center and virtually through our online meeting platform.

COMMUNICATIONS AND CAREER CENTER

SATURDAY, JUNE 11
9:30 AM–4:00 PM EDT

SUNDAY-MONDAY, JUNE 12–13
9:00 AM–4:00 PM EDT

Located in the ENDOExpo Hall, the new Communications and Career Center combines education, news, and networking in one location. Part CNN-style situation desk, part semi-private and communal career-building space, this is your hub for event news and professional growth at ENDO 2022. Have your professional headshot taken during the following days and times:

SATURDAY, JUNE 11
1:00–4:00 PM EDT

SUNDAY, JUNE 12
12:30–4:00 PM AND 5:00–6:30 PM EDT

MONDAY, JUNE 13
12:30–5:00 PM EDT

ENDO STORE

SATURDAY, JUNE 11
9:30 AM–4:00 PM EDT

SUNDAY-MONDAY, JUNE 12–14
9:00 AM–4:00 PM EDT

Don't miss your chance to purchase Endocrine Society educational products, including our new Diabetes Certificate Program, ESAP™ 2022, Endocrine Case Management: Meet the Professor, and Endocrine Board Review, as well as apparel and gifts for friends and family at discounted rates! Located in the ENDOExpo Hall.

ENDOCRINE SOCIETY BOOTH

SATURDAY, JUNE 11
9:30 AM–4:00 PM EDT

SUNDAY-MONDAY, JUNE 12–13
9:00 AM–4:00 PM EDT

Visit the Endocrine Society Booth for free swag, prizes, and the latest on what's going on at the Endocrine Society. Relax, catch up with colleagues, participate in daily trivia, and even have your caricature drawn on Friday or Saturday. Located in the ENDOExpo Hall.

BASIC SCIENCE PAVILION

SATURDAY, JUNE 11
9:45 AM–5:45 PM EDT

SUNDAY-MONDAY, JUNE 12–13
9:15 AM–5:15 PM EDT

The ENDO 2022 Basic Science Pavilion is an experience within the experience. Designed specifically for basic scientists, the Pavilion includes dedicated educational session rooms and a social lounge for the pre-and post-symposia conversations that allow leading scientists in the field of endocrinology to have the important questions that move research and breakthroughs forward. All are welcome in the Pavilion, but basic science takes center stage in this dedicated area.

POSTER HALL

Network with colleagues and view the latest advances in endocrinology with nearly 1,100 posters on display.

SATURDAY, JUNE 11
9:30 AM–3:30 PM EDT

SUNDAY, JUNE 12
9:00 AM–3:30 PM EDT

MONDAY, JUNE 13
9:00 AM–3:30 PM EDT

FUTURE MEETINGS

**CLINICAL ENDOCRINOLOGY
UPDATE 2022**
SEPTEMBER 8-10, 2022
MIAMI, FL AND ONLINE

ENDOCRINE BOARD REVIEW 2022
SEPTEMBER 16-18, 2022
ONLINE ONLY

**THE MECHANISMS OF ALLOSTASIS
CONFERENCE: STRESSED OR
STRESSED OUT**
NEW ORLEANS, LA
SEPTEMBER 18-21, 2022

ENDO 2023
JUNE 15-18, 2023
CHICAGO, IL

COAT AND LUGGAGE CHECK

Coat and luggage check are available at your event hotel. In addition, the Endocrine Society will offer coat and luggage check at the Georgia World Congress Center in the International Hall on Tuesday, June 14, 2022, only. All luggage must be retrieved no later than 1:30 pm EDT on Tuesday, June 14. Any items not retrieved by that time may be transferred to the Center's lost and found after that time.

MASK POLICY

The wearing of protective masks is encouraged for all attendees, participants, sponsors, exhibitors and convention center workers. Society staff will wear masks. When worn, masks should cover both mouth and nose.

SHUTTLE SERVICE

Attendees to ENDO 2022 will receive Shuttle Bus Service on the following schedule:

FRIDAY, JUNE 10

6:30 AM–7:30 PM EDT

SATURDAY, JUNE 11

6:30–10:00 AM, 3:30–8:00 PM EDT

SUNDAY, JUNE 12

6:15–10:00 AM, 3:30–7:30 PM EDT

MONDAY, JUNE 13

6:15–10:00 AM, 3:30–7:30 PM EDT

TUESDAY, JUNE 14

6:15–10:00 AM, 10:30 AM–2:30 PM EDT

Shuttle Bus Service will be provided at the following hotel properties:

AC Hotel by Marriot Downtown Atlanta

Courtyard by Marriott Atlanta Downtown

Embassy Suites Atlanta at Centennial Olympic Park

The Glenn Hotel, Autograph Collection

Hilton Garden Inn Atlanta

Home2Suites Atlanta Downtown

Hampton Inn & Suites Atlanta Downtown

Hotel Indigo Atlanta Downtown

Hyatt Place Atlanta Centennial Park

Hyatt Regency Atlanta

Marriott Marquis Atlanta Downtown

Ritz Carlton Atlanta

Downtown–Doubletree by Hilton

W Atlanta Downtown

Westin Peachtree Plaza

Attendees who do not reserve rooms through the Society's official housing company (onPeak) must purchase a \$75 shuttle pass to be able to ride shuttle buses.

SPECIAL INTEREST GROUPS (SIGS)

Our Special Interest Groups (SIGs) were created as an exclusive member benefit to help you expand your network based on professional interests, regardless of your location. Our current SIGs include Adrenal and Pituitary, Early Career, Entrepreneurship, Transgender Research and Medicine, Endocrine-Disrupting Chemicals, Endocrine Cancers, and Oncoendocrinology.

WI-FI

WIFI SSID: ENDO2022

Password: endocrine

ACCREDITATION AND CLAIMING CREDITS

ACCREDITATION

ACCREDITATION STATEMENT

The Endocrine Society is accredited by the Accreditation Council for Continuing Medical Education (ACCME) to provide continuing medical education for physicians. The Endocrine Society has achieved Accreditation with Commendation.

Description automatically generated the Endocrine Society designates this activity for a maximum of 110.0 AMA PRA Category 1 Credits™. Physicians should claim only the credit commensurate with the extent of their participation in the activity.



MAINTENANCE OF CERTIFICATION (MOC)

Successful completion of this CME activity, which includes participation in the evaluation component, enables the participant to earn up to 27.25 MOC points in the American Board of Internal Medicine's (ABIM) Maintenance of Certification (MOC) program. It is the CME activity provider's responsibility to submit participant completion information to ACCME for the purpose of granting ABIM or ABP MOC credit.



CLAIMING CREDITS

ENDO 2022 CREDIT CLAIMING INSTRUCTIONS

1. Log into education.endocrine.org
2. Select "My Courses" from the left side menu
3. Find ENDO 2022 and select "Start Course" to launch the evaluation and claim credit

ENDO 2022 ANCILLARY SYMPOSIA CREDIT CLAIM INSTRUCTIONS

1. Log into education.endocrine.org
2. Select "My Courses" from the left side menu
3. Find the symposium you attended and select "Start Course" to launch the evaluation and claim credit

Note: the evaluation is only available to those who are marked as attended. In person attendees are to check in before the session and virtual attendees will be based on logins to the session. As this is for attendees only, the evaluation will be available within 24 hours following the event and attendees will be notified via email.

BASIC SCIENCE PATHWAYS

Our popular Science Pathways are back and have been enhanced to provide you with a focused meeting experience. These special “meeting-within-a-meeting” tracks integrate focused discussions, oral and poster abstract sessions, and networking opportunities, and include a reception with thought leaders and colleagues. This year's Pathways will cover diabetes and metabolism, neuroendocrinology, nuclear receptors and signaling, and reproductive endocrinology.

DIABETES AND METABOLISM

SATURDAY, JUNE 11

9:45–11:15 AM EDT

NIDDK SYMPOSIUM: Novel Technologies and Experimental Platforms for the Study of Human Diabetes Pathophysiology

A313-A314

SYMPOSIUM: Environmental Effects on Reproduction and Development

B403

4:15–5:45 PM EDT

SYMPOSIUM: Molecular Aspects of COVID-19 and Diabetes

A404-A405

SYMPOSIUM: Upstream and Downstream of NRs: Mechanisms in Inflammation and Metabolism

B403

SYMPOSIUM: Sex Differences in Metabolism

B407

SUNDAY, JUNE 12

8:00–9:00 AM EDT

PLENARY: Endocrine Society and American Cancer Society Converge in Atlanta

Hall A3

9:15–10:45 AM EDT

SYMPOSIUM: Advances in Human Islet Research to Optimize Translation to Diabetes Cures

B404

SYMPOSIUM: Co-clinical Models to Interrogate Neo[Pro]plasia Models

B407

1:30–2:15 PM EDT

MEET THE SCIENTIST: My Path to a Career Studying Diet, Obesity, and Diabetes

B405

3:45–5:15 PM EDT

SYMPOSIUM: When the Immune System Gets It Wrong!

A311-A312

MONDAY, JUNE 13

9:15–10:45 AM EDT

SYMPOSIUM: Nuclear Receptors in Immunometabolism: It's Not Just Macrophages!

B403

3:45–5:15 PM EDT

SYMPOSIUM: Novel Aspects in Incretin and Glucagon Biology: From Basic to Clinical Applications

A313-A314

SYMPOSIUM: PCOS and Metabolic Consequences – The Skinny on Adipocytes

B404

TUESDAY, JUNE 14

8:00–9:30 AM EDT

SYMPOSIUM: The Gut Microbiome and Metabolism

B404

11:30 AM–1:00 PM EDT

SYMPOSIUM: Impact of Diet and Obesity-Modulated Signaling in Breast Cancer: Causal Biology and Therapeutic Opportunities

B403

NEUROENDOCRINOLOGY

SATURDAY, JUNE 11

9:45–11:15 AM EDT

SYMPOSIUM: Environmental Effects on Reproduction and Development

B403

4:15–5:45 PM EDT

SYMPOSIUM: Breakthroughs in Understanding Pituitary Networks

B405

SYMPOSIUM: Sex Differences in Metabolism

B407

SUNDAY, JUNE 12

8:00–9:30 AM EDT

PLENARY: Endocrine Society and American Cancer Society Converge in Atlanta

Hall A3

9:15–10:45 AM EDT

SYMPOSIUM: Dissecting Pituitary Tumorigenesis

B403

2:45–3:30 PM EDT

MEET THE SCIENTIST: My Path to a Career Studying the Female Brain and Cognitive Health

B405

3:45–5:15 PM EDT

SYMPOSIUM: When the Immune System Gets It Wrong!

A311-A312

MONDAY, JUNE 13

9:15–10:45 AM EDT

SYMPOSIUM: The Aging Female Brain

B405

3:45–5:15 PM EDT

SYMPOSIUM: Novel Aspects in Incretin and Glucagon Biology: From Basic to Clinical Applications

A313-A314

TUESDAY, JUNE 14

8:00–9:30 AM EDT

SYMPOSIUM: Recent Advances in Gonadotropin Signaling and Therapy

B405

11:30–1:00 PM EDT

SYMPOSIUM: Fill 'er Up! Satiety and Satiety Mechanisms

B407

NUCLEAR RECEPTORS AND SIGNALING

SATURDAY, JUNE 11

9:45–11:15 AM EDT

SYMPOSIUM: The Many Faces and Phases of Co-Regulators

B405

SYMPOSIUM: Advances in the Fundamental Understanding and Therapeutic Applications of Cilia

B407

2:00–2:45 PM EDT

MEET THE SCIENTIST: My Path to a Career in Academic Research Studying Signal-Regulated Gene Expression

B405

4:15–5:45 PM EDT

SYMPOSIUM: Upstream and Downstream of NRs: Mechanisms in Inflammation and Metabolism

B403



SYMPOSIUM: Location, Location, Location:
Advances in Spatial Regulation and Hormone
Receptor Signaling
B404

TUESDAY, JUNE 14

8:00–9:30 AM EDT

SYMPOSIUM: Recent Advances in Gonadotropin
Signaling and Therapy
B405

11:30 AM–1:00 PM EDT

SYMPOSIUM: Advances and Novel Perspectives
of Mineralocorticoid Receptor Antagonism
A315-A316

SYMPOSIUM: Impact of Diet and Obesity-
Modulated Signaling in Breast Cancer: Causal
Biology and Therapeutic Opportunities
B403

REPRODUCTIVE ENDOCRINOLOGY

SATURDAY, JUNE 11

9:45–11:15 AM EDT

SYMPOSIUM: Environmental Effects on
Reproduction and Development
B403

SYMPOSIUM: Advances in the Fundamental
Understanding and Therapeutic Applications of
Cilia
B407

3:15–4:00 PM EDT

MEET THE SCIENTIST: My Path to a Career
Studying Uterine Development and Function
B405

4:15–5:45 PM EDT

SYMPOSIUM: Upstream and Downstream of NRs:
Mechanisms in Inflammation and Metabolism
B403

SYMPOSIUM: Location, Location, Location:
Advances in Spatial Regulation and Hormone
Receptor Signaling
B404

SUNDAY, JUNE 12

9:15–10:45 PM EDT

SYMPOSIUM: Signaling That Controls
Primordial Follicle Activation
B405

3:45–5:15 PM EDT

SYMPOSIUM: When the Immune System Gets
It Wrong!
A311-A312
SYMPOSIUM: Mechanisms of Oocyte
Development
B405

MONDAY, JUNE 13

9:15–10:45 AM EDT

SYMPOSIUM: The Hormonal Impact on
Endometriosis – The Unseen Disease of
Reproduction
A411

9:15–10:45 AM EDT

SYMPOSIUM: Steroidogenesis and Androgen
Actions
B407

1:30–2:30 PM EDT

PLENARY: Addressing Challenges in Fertility
and Reproduction
Hall A3

3:45–5:15 PM EDT

SYMPOSIUM: Spermatogenesis: Targets for
Fertility and Contraception
B407

TUESDAY, JUNE 14

8:00–9:30 AM EDT

SYMPOSIUM: Recent Advances in Gonadotropin
Signaling and Therapy
B405

SYMPOSIUM: Developmental Origins of the
Endometrium: Omics From Within the Cradle
B407

11:30 AM–1:00 PM EDT

SYMPOSIUM: Advances in Our Understanding
of Intersex Conditions
A313-A314

ABSTRACT SESSIONS

SATURDAY, JUNE 11

11:30 AM–1:00 PM EDT

ORAL SESSION: Individualized Considerations in Skeletal Health and Fracture Risk

A311-A312

ORAL SESSION: Health Disparities in Cardiovascular Endocrinology, Lipids and Fatty Liver Disease

A313-A315

ORAL SESSION: From Pre-diabetes to Stem Cell Therapy for Type 1 Diabetes: A Smorgasbord of Clinical Diabetes Research

A404-A405

ORAL SESSION: Updates on the Adrenal Cortex

A411

ORAL SESSION: Models of Care: Disorders/ Differences of Sex Development (DSD) and Transgender

A412

ORAL SESSION: Hormonal Determinants for Human Reproduction from Infertility to Gestation and the Menopause Transition

B403

ORAL SESSION: Transcriptional Responses: More Than Meets the Eye

B404

ORAL SESSION: Pathways to People: Deciphering Novel Neuroendocrine Mechanisms and Translation to Novel Therapeutics

B405

ORAL SESSION: Thyroid Neoplasia and Cancer

B407

1:00–2:00 PM EDT

RAPID FIRE: Membrane Receptors and Intracellular Signaling 1

Poster Pod 1, ENDOExpo

RAPID FIRE: Bone and Mineral Metabolism 1

Poster Pod 2, ENDOExpo

RAPID FIRE: Nuclear Receptors/Coregulators 1

Poster Pod 3, ENDOExpo

RAPID FIRE: Neuroendocrinology and Pituitary 1

Poster Pod 4, ENDOExpo

RAPID FIRE: Adipose Tissue, Appetite, and Obesity 1

Poster Pod 5, ENDOExpo

RAPID FIRE: Tumor Biology and Neoplasia 1

Poster Pod 6, ENDOExpo

RAPID FIRE: Clinical Adrenal and Pituitary 1

Poster Pod 7, ENDOExpo

RAPID FIRE: Pediatric Endocrinology 1

Poster Pod 9, ENDOExpo

RAPID FIRE: Hormones Including HA and Metabolism

Poster Pod 10, ENDOExpo

RAPID FIRE: Diabetes and Vascular Disease 1

Poster Pod 11, ENDOExpo

RAPID FIRE: Thyroid Biology and Cancer 1

Poster Pod 12, ENDOExpo

SUNDAY, JUNE 12

11:00 AM–12:30 PM EDT

ORAL SESSION: Genetic, Dietary, and Pharmacological Impact on Obesity

A313-A314

ORAL SESSION: Rocking Around the Cortex and Medulla

A404-A405

ORAL SESSION: Osteoporosis and Metabolic Bone Diseases

A411

ORAL SESSION: Sugar and How We Grow

B403

ORAL SESSION: It's all About Ovulation: The Impact of Genetics, Hormones, and Metabolism on Ovulatory Dysfunction

B404

ORAL SESSION: Insights on New Targets in Estrogen-dependent Cancer Regulation

B405

ORAL SESSION: Hypothalamic Regulation of Reproduction

B407

ORAL SESSION: Mechanistic and Clinical Aspects of Benign Thyroid Disease

A315-316

12:30–1:30 PM EDT

RAPID FIRE: Membrane Receptors and Intracellular Signaling 2

Poster Pod 1, ENDOExpo

RAPID FIRE: Bone & Mineral Metabolism 2

Poster Pod 2, ENDOExpo

RAPID FIRE: Nuclear Receptors/Coregulators 2

Poster Pod 3, ENDOExpo

RAPID FIRE: Neuroendocrinology 2

Poster Pod 4, ENDOExpo

RAPID FIRE: Adipose Tissue, Appetite, and Obesity 2

Poster Pod 5, ENDOExpo

RAPID FIRE: Tumor Biology and Neoplasia 2

Poster Pod 6, ENDOExpo

RAPID FIRE: Clinical Adrenal and Pituitary 2

Poster Pod 7, ENDOExpo

RAPID FIRE: Pediatric Endocrinology 2

Poster Pod 9, ENDOExpo

RAPID FIRE: Endocrine Disruptors

Poster Pod 10, ENDOExpo

RAPID FIRE: Diabetes & Vascular Disease 2

Poster Pod 11, ENDOExpo

RAPID FIRE: Thyroid Biology and Cancer 2

Poster Pod 12, ENDOExpo

MONDAY, JUNE 13

11:00 AM–12:30 PM EDT

LATE BREAKING ORAL SESSION: Tools and Targets in Basic Endocrinology Research

B403

ORAL SESSION: Puberty and Growth

A311-A312

ORAL SESSION: New Advances on Primary Aldosteronism and the Role of the RAAS in Cardiovascular Health

A404-A405

ORAL SESSION: Molecular Mechanisms Controlling Energy Balance and the Development of Obesity

B403

ORAL SESSION: Multi-tissue Signaling Pathways Involved in Diabetes Pathogenesis

B404

ORAL SESSION: Molecular Mechanisms of Male Reproductive Tract Development and Effects of Testosterone Therapies on Health and Reproduction

B405

ORAL SESSION: Advances in Thyroid Basic and Translational Research

A313-A314

ORAL SESSION: Parathyroid Hormone Mechanisms of Action

A411

ORAL SESSION: Unconventional Modulation: Post-transcriptional, Metabolite, and Co-chaperone Influences on Steroid Receptor Function

B407

12:30–1:30 PM EDT

RAPID FIRE: Cardiovascular Endocrinology

Poster Pod 1, ENDOExpo

RAPID FIRE: Bone & Mineral Metabolism 3

Poster Pod 2, ENDOExpo

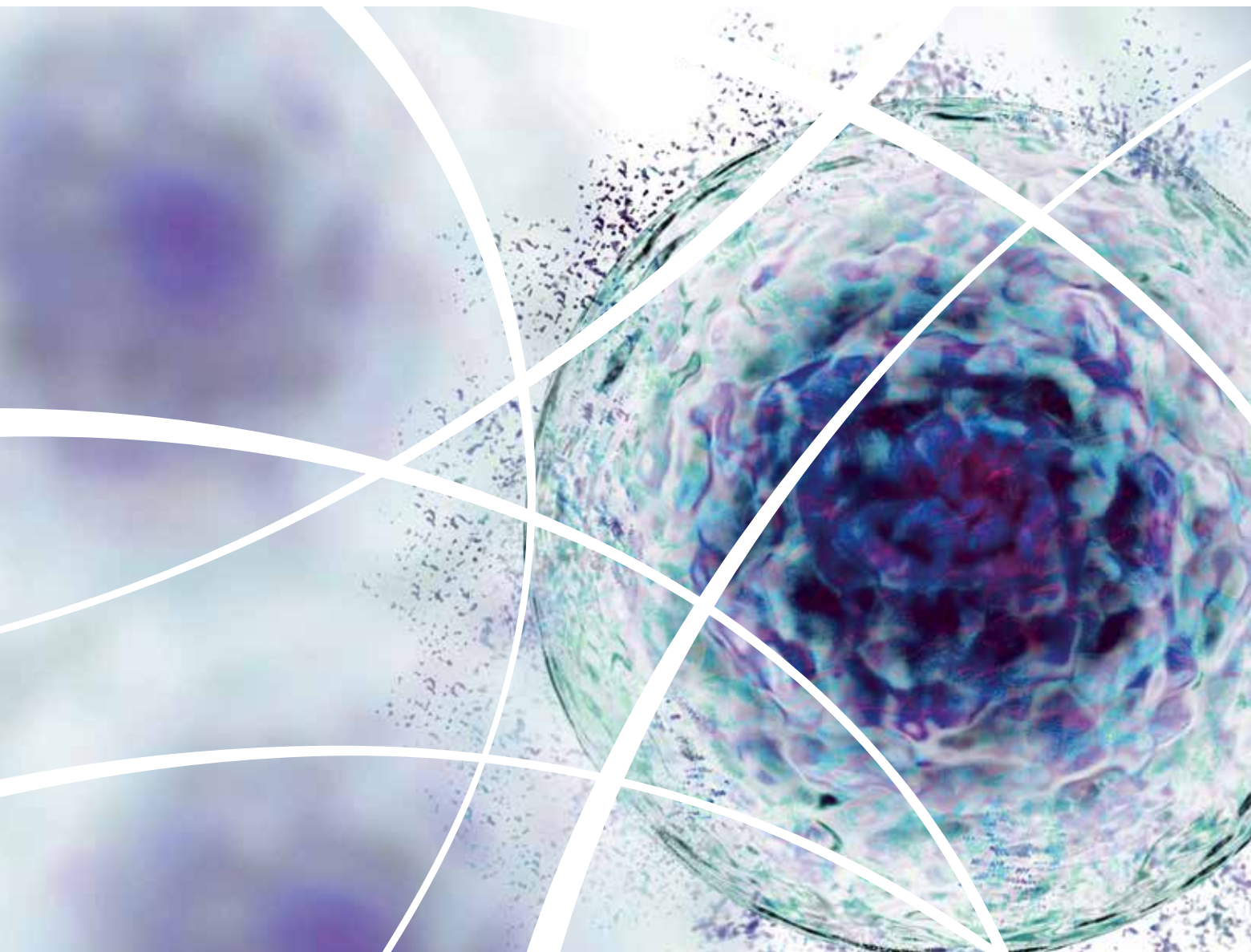
RAPID FIRE: Nuclear Receptors/Coregulators 3

Poster Pod 3, ENDOExpo

RAPID FIRE: Neuroendocrinology 3

Poster Pod 4, ENDOExpo

RAPID FIRE: Adipose Tissue, Appetite, and Obesity 3



Poster Pod 5, ENDOExpo

RAPID FIRE: Tumor Biology and Adrenal 3

Poster Pod 6, ENDOExpo

RAPID FIRE: Clinical Adrenal and Pituitary 3

Poster Pod 7, ENDOExpo

RAPID FIRE: Pediatric Endocrinology 3

Poster Pod 9, ENDOExpo

Reproductive Hormones on Health

Poster Pod 10, ENDOExpo

RAPID FIRE: Thyroid Biology and Cancer 3

Poster Pod 12, ENDOExpo

TUESDAY, JUNE 14

9:45–11:15 AM EDT

LATE BREAKING ORAL SESSION: Clinical and Translational Studies

A412

ORAL SESSION: Advances in Understanding Pathophysiology and Management of Hypothalamo-Pituitary Disease

A313-A314

ORAL SESSION: Understanding Disparities in Diabetes Clinical Care: Implications for Technology Use, Response to Medication Therapy, and Risk of Complications

A315-A316

ORAL SESSION: Treatment Resistance and Outcomes in Breast Cancer: Newly Identified Regulatory Pathways

A311-A312



POSTER SESSIONS

POSTER HALL

The Poster Hall is open on Saturday–Monday during the times below.

SATURDAY, JUNE 11
9:30 AM–3:30 PM

SUNDAY, JUNE 12
9:00–3:30 PM

MONDAY, JUNE 13
9:00 AM–3:30 PM

MEET AND GREET

Poster presenters will be available at their poster boards to share their work and answer questions during the Meet and Greet times below.

SATURDAY, JUNE 11
1:00–3:00 PM

SUNDAY, JUNE 12
12:30–2:30 PM

MONDAY, JUNE 13
12:30–2:30 PM

RAPID FIRE PRESENTATIONS

In addition, the Rapid Fire Presentations will take place in the digital poster pods during the dates and times below.

SATURDAY, JUNE 11
1:00–1:00 PM

SUNDAY, JUNE 12
12:30–1:30 PM

MONDAY, JUNE 13
12:30–1:30 PM

SATURDAY, JUNE 11

ADRENAL

PSAT01-PSAT55, PSAT66-PSAT101, PSAT122-PSAT123

ADRENAL (EXCLUDING MINERALOCORTICOID)

LBSAT56-LBSAT59

ADRENAL DISORDERS

LBSAT60-LBSAT65

PEDIATRIC ENDOCRINOLOGY

PSAT102-PSAT121

BONE AND MINERAL METABOLISM

LBSAT126-LBSAT132, PSAT134-PSAT138, LBSAT139-LBSAT142, PSAT143, LBSAT144-LBSAT145, PSAT146-PSAT228, LBSAT229-LBSAT230

TRANSGENDER MEDICINE

LBSAT133

DIABETES AND GLUCOSE METABOLISM

PSAT231-PSAT232

TUMOR BIOLOGY








PSAT233

THYROID

PSAT234-PSAT235, LBSAT237-LBSAT238, PSAT239-PSAT246, LBSAT247, PSAT248-PSAT254, LBSAT255-LBSAT256, PSAT257-PSAT289, PSAT293-PSAT307, PSAT315-PSAT366, LBSAT367, PSAT368-PSAT387

POSTER RIBBONS

The Poster Ribbons highlight last call posters and posters within the top tier of abstracts submitted by trainees and early career members. Congratulate presenters when you see these ribbons on their posters.

-  C. Wayne Bardin MD International Travel Awards
-  Eugenia Rosenberg Abstract Travel Awards
-  Endocrine Society Outstanding Abstract Award
-  Mara E. Lieberman Memorial Travel Awards
-  Presidential Poster Award
-  Late Breaking Science
-  Health Disparities



MISCELLANEOUS

LBSAT236, LBSAT308-LBSAT309

THYROID CANCER

LSBSAT290-LBSAT292

THYROID DISORDERS

LBSAT308-LBSAT314

SUNDAY, JUNE 12

ADRENAL

PSUN01-PSUN29, PSUN32-PSUN35,
PSUN42-PSUN43

ADRENAL (EXCLUDING MINERALOCORTICOIDS)

LBSUN30-LBSUN31

THYROID

PSUN36-PSUN40

CARDIOVASCULAR ENDOCRINOLOGY

PSUN44-PSUN68, LBSUN69-LBSUN75

BONE AND MINERAL METABOLISM I

PSUN76

ADIPOSE TISSUE, APPETITE, OBESITY

PSUN77-PSUN84, LBSUN85-LBSUN87,
PSUN88-PSUN97, PBSUN98-PBSUN99,
PSUN100-PSUN128, LBSUN129-LBSUN132

DIABETES AND GLUCOSE METABOLISM

PSUN133-PSUN148, LBSUN149-LBSUN154,
PSUN155-PSUN160, LBSUN161-LBSUN162,
PSUN163-PSUN179, LBSUN180, PSUN181-
PSUN204, LBSUN205-LBSUN215,
PSUN216-PSUN254, PSUN256-PSUN286,
PSUN295-PSUN305, LBSUN306-LBSUN310,
PSUN311-PSUN317, LBSUN318-LBSUN322,
PSUN232-PSUN330, LBSUN331-LBSUN332,
PSUN333-PSUN341

ENDOCRINE NEOPLASIA (INCLUDING MEN, VHL, AND CARCINOID; EXCLUDING THYROID NEOPLASIA)

LBSUN255

DIABETES

LBSUN287-LBSUN294

TUMOR BIOLOGY

PSUN341, LBSUN342-LBSUN343, PSUN344,
LBSUN346-LBSUN348, PSUN49-PSUN359,
LBSUN360-LBSUN362, PSUN363-PSUN384

HORMONE-DEPENDENT TUMORS

LBSUN345

MONDAY, JUNE 13

ENDOCRINE DISRUPTION

PMON01, PMON03-PMON19

DIABETES AND GLUCOSE METABOLISM

PMON02

GENETICS AND DEVELOPMENT

PMON20-PMON34

NEUROENDOCRINOLOGY AND PITUITARY

PMON35-PMON61, LBMON62, PMON63-
PMON64, LBMON65, PMON66-PMON113,
LBMON114, PMON115-PMON133, LBMON134-
LBMON141, PMON142-PMON171, LBMON172-
LBMON178, PMON179-PMON180

NON-STEROID HORMONE SIGNALING

PMON181-PMON184, LBMON185-LBMON186

PEDIATRIC ENDOCRINOLOGY

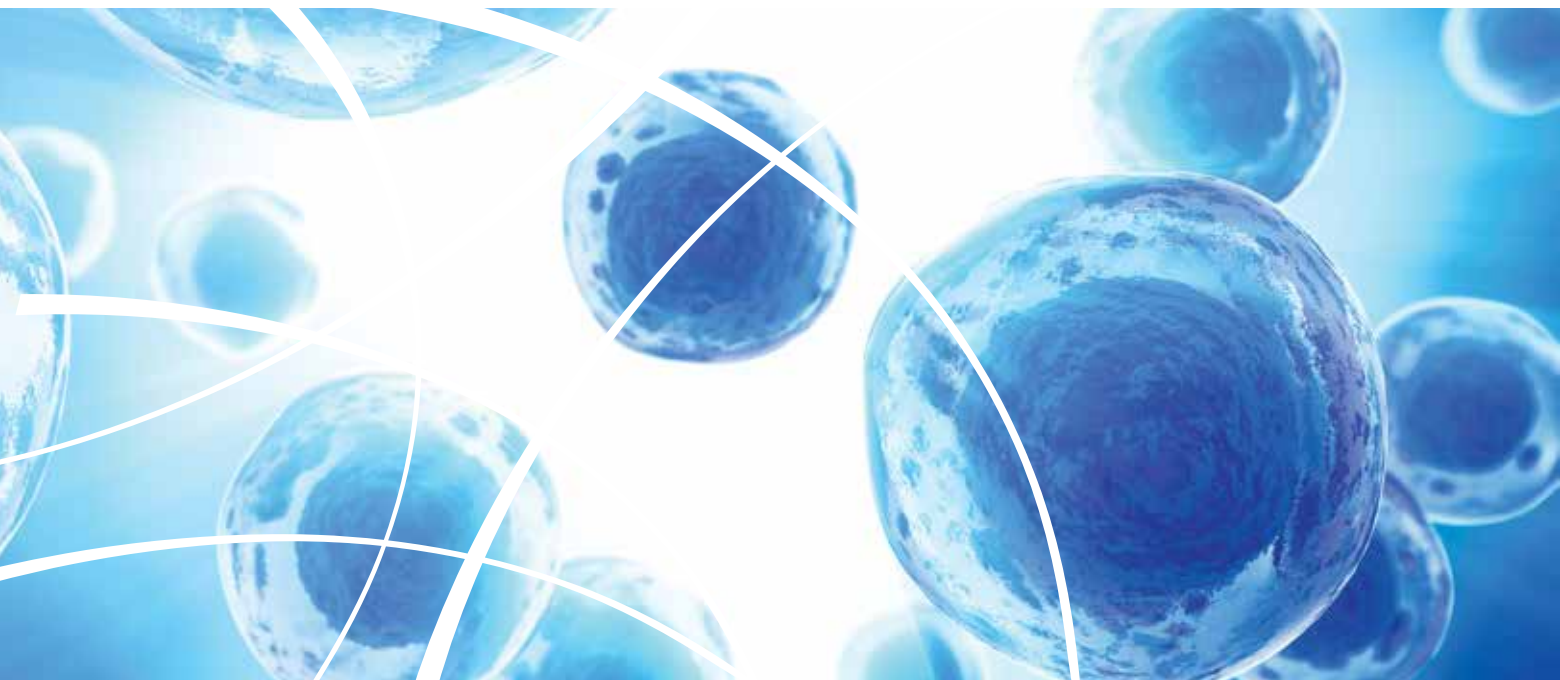
PMON187-PMON193, LBMON194-LBMON199,
PMON306-PMON336

REPRODUCTIVE ENDOCRINOLOGY

PMON200-PMON230, LBMON231-LBMON237,
PMON238-PMON271, LBMON272-PMON274,
PMON275-PMON281

STEROID HORMONES AND RECEPTORS

PMON283-PMON297, LBMON298-LBMON299,
PMON300-PMON305



AWARDS SCHEDULE

PLENARY: ENVISIONING FUTURE THERAPIES FOR T1D: WHERE BIOLOGY MEETS TECHNOLOGY

SATURDAY, JUNE 11

8:00–9:30 AM EDT

Hall A3

Fred Conrad Koch Lifetime Achievement Award

Presented to Henry M. Kronenberg, MD

PLENARY: HEALTH EQUITY IN ENDOCRINOLOGY

SATURDAY, JUNE 11

2:00–3:00 PM EDT

Hall A3

Vigersky Outstanding Clinical Practitioner Award

Presented to David W. Harris, MD

Outstanding Scholarly Physician Award

Presented to Ken K. Y. Ho, MD, FRACP, FRCP, FAHMS

Outstanding Leadership in Endocrinology Award

Presented to John A.H. Wass, MA, MD

GROWTH HORMONE: AN ADULT ENDOCRINE MISNOMER

SATURDAY, JUNE 11

3:00–3:30 PM EDT

Hall A3

Transatlantic Alliance Award

Shlomo Melmed, MB, ChB, FRCP, MACP



PLENARY: ENDOCRINE SOCIETY AND AMERICAN CANCER SOCIETY CONVERGE IN ATLANTA

SUNDAY, JUNE 12

8:00–9:00 AM EDT

Hall A3

Outstanding Educator Award

Presented to Kathryn Ann Martin, MD

Outstanding Mentor Award

Presented to Jane E. B. Reusch, MD

PLENARY: CARDIOVASCULAR HEALTH IN WOMEN: FROM BENCH TO BEDSIDE

SUNDAY, JUNE 12

2:30–3:30 PM EDT

Hall A3

International Excellence in Endocrinology Award

Presented to Lourdes Ibáñez, MD, PhD

Outstanding Clinical Investigator Award

Presented to Karel Pacak, MD, PhD, DSc, PhD

Gerald D. Aurbach Award for Outstanding Translational Research
Presented to Terry J. Smith, MD

PLENARY: INTERSEX, TRANSGENDER, EXERCISE IN ENDOCRINOLOGY

MONDAY, JUNE 13

8:00–9:00 AM EDT

Hall A3

Richard E. Weitzman Outstanding Early Career Investigator Award

Presented to Shingo Kajimura, PhD

Roy O. Greep Award for Outstanding Research

Presented to Michael W. Schwartz, MD

PLENARY: ADDRESSING CHALLENGES IN FERTILITY AND REPRODUCTION

MONDAY, JUNE 13

1:30–2:30 PM EDT

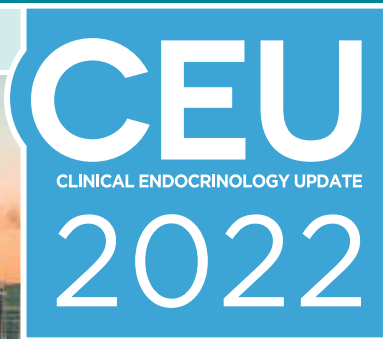
Hall A3

Outstanding Public Service Award

Presented to Rita Rastogi Kalyani, MD, MHS

Sidney H. Ingbar Award for Distinguished Service

Presented to Simon James Rhodes, PhD, BSC



REGISTRATION IS NOW OPEN!

CLINICAL ENDOCRINOLOGY UPDATE
SEPTEMBER 8-10, 2022
MIAMI, FLORIDA AND ONLINE

DISCOVER THE LATEST
DEVELOPMENTS IN HORMONE CARE
[ENDOCRINE.ORG/CEU2022](https://endocrine.org/ceu2022)

© 2022 ENDOCRINE SOCIETY



REGISTRATION IS NOW OPEN!

ENDOCRINE BOARD REVIEW
SEPTEMBER 16-18, 2022
ONLINE EVENT

BEST-IN-CLASS PREPARATION
FOR YOUR BOARD EXAM
[ENDOCRINE.ORG/EBR2022](https://endocrine.org/eb2022)

© 2022 ENDOCRINE SOCIETY



SCHEDULE AT A GLANCE: SATURDAY, JUNE 11 8:00 AM–6:45 PM EDT

TIME	AGING, BONE, AND CALCIOTROPIC HORMONES	CARDIOVASCULAR AND LIPIDS	CLINICAL ADRENAL	CLINICAL PITUITARY	DIABETES AND OBESITY
8:00 AM					PLENARY: Envisioning Future Therapies for T1D: Where Biology Meets Technology Hall A3 8:00–9:30 AM EDT
8:15 AM					
8:30 AM					
8:45 AM					
9:00 AM					
9:15 AM					
9:30 AM					
9:45 AM		SYMPOSIUM: Novel Non Statin Therapies for LDL Cholesterol Lowering A315-A316 9:45–11:15 AM EDT	ENDOCRINE DEBATE: Functional Adrenal Nodules: Whip it, Whack it, or Zap it Hall A3 9:45–11:15 AM EDT	SYMPOSIUM: Dilemmas in the Management of Pituitary Tumors A311-A312 9:45–11:15 AM EDT	SYMPOSIUM: Exploring New Diagnostic and Treatment Options for Fatty Liver Disease From Pediatrics to Adult Care A411 9:45–11:15 AM EDT NIDDK SYMPOSIUM: Novel Technologies and Experimental Platforms for the Study of Human Diabetes Pathophysiology A313-A314 9:45–11:15 AM EDT
10:00 AM					
10:15 AM					
10:30 AM					
10:45 AM					
11:00 AM					
11:15 AM					
11:30 AM	ORAL SESSIONS: Individualized Considerations in Skeletal Health and Fracture Risk A311-312 11:30 AM–1:00 PM EDT	ORAL SESSIONS: Health Disparities in Cardiovascular Endocrinology, Lipids and Fatty Liver Disease A313-A314 11:30 AM–1:00 PM EDT	ORAL SESSIONS: Updates on the Adrenal Cortex A411 11:30 AM–1:00 PM EDT		MASTER CLINICIAN: Management of Type 2 Diabetes with CKD Hall A3 11:30 AM–1:00 PM EDT ORAL SESSIONS: From Pre-diabetes to Stem Cell Therapy for Type 1 Diabetes: A Smorgasboard of Clinical Diabetes Research A404-405 11:30 AM–1:00 PM EDT
11:45 AM					
12:00 AM					
12:15 AM					
12:30 AM					
12:45 AM					
1:00 PM					
1:15 PM					
1:30 PM					
1:45 PM					
2:00 PM	MEET THE PROFESSOR: Denosumab Discontinuation A311-A312 2:00–2:45 PM EDT	MEET THE PROFESSOR: Choosing Cholesterol Lowering Medications in Patients with Liver Disease A313-A314 2:00–2:45 PM EDT	MEET THE PROFESSOR: Management of Glucocorticoid Induced Adrenal Insufficiency A411 2:00–2:45 AM EDT		MEET THE PROFESSOR: Hypothalamic Obesity A404-A405 2:00–2:45 PM EDT
2:15 PM					
2:30 PM					
2:45 PM					
3:00 PM					
3:15 PM	MEET THE PROFESSOR: Using the Best Available Evidence to Personalize Osteoporosis Treatment B407 3:15–4:00 PM EDT		MEET THE PROFESSOR: Advances in the Treatment of Congenital Adrenal Hyperplasia A313-A314 3:15–4:00 AM EDT	MEET THE PROFESSOR: Perioperative Management of Pituitary Adenoma A311-A312 3:15–4:00 PM EDT	MEET THE PROFESSOR: Disparities in Diabetes Care and Programs Which Help A315-A316 3:15–4:00 PM EDT
3:30 PM					
3:45 PM					
4:00 PM					
4:15 PM	SYMPOSIUM: Disparities in Skeletal Health A311-A312 4:15–5:45 PM EDT		SYMPOSIUM: Silent Adrenal Killers A315-A316 4:15–5:45 PM EDT	SYMPOSIUM: Breakthroughs in Understanding Pituitary Networks B405 4:15–5:45 PM EDT	SYMPOSIUM: Sex Differences in Metabolism B407 4:15–5:45 PM EDT SYMPOSIUM: Molecular Aspects of COVID-19 and Diabetes A404-A405 4:15–5:45 PM EDT
4:30 PM					
4:45 PM					
5:00 PM					
5:15 PM					
5:30 PM					
5:45 PM		Basic Science Reception Basic Science Pavilion, B401 5:45–6:45 PM EDT			
6:00 PM					
6:15 PM					
6:30 PM					
6:45 PM					

NUCLEAR AND MEMBRANE SIGNALING	PEDIATRICS AND GENETICS	REPRODUCTION AND NEUROENDOCRINOLOGY	THYROID, CANCER, AND NEOPLASIA	MISCELLANEOUS	PROFESSIONAL DEVELOPMENT
SYMPOSIUM: Advances in the Fundamental Understanding and Therapeutic Applications of Cilia B407 9:45–11:15 AM EDT SYMPOSIUM: The Many Faces and Phases of Co-Regulators B405 9:45–11:15 AM EDT	SYMPOSIUM: Dealing with Growing Pains A404-A405 9:45–11:15 AM EDT	SYMPOSIUM: Environmental Effects on Reproduction and Development B403 9:45–11:15 AM EDT	SYMPOSIUM: TIME Out: Emerging Approaches to Combat the Tumor Immunosuppressive Microenvironment in Endocrine-Related Cancers B404 9:45–11:15 AM EDT		PROFESSIONAL DEVELOPMENT WORKSHOP: The Business of Starting and Running a Lab: Top 5 Strategies to Running a Successful Lab A408 9:45–11:15 AM EDT
ORAL SESSIONS: Transcriptional Responses: More than Meets the Eye B404 11:30 AM–1:00 PM EDT		ORAL SESSIONS: Models of Care: Disorders/Differences of Sex Development (DSD) and Transgender A412 11:30 AM–1:00 PM EDT ORAL SESSIONS: Hormonal Determinants for Human Reproduction from Infertility to Gestation and the Menopause Transition B403 11:30 AM–1:00 PM EDT ORAL SESSIONS: Pathways to People: Deciphering Novel Neuroendocrine Mechanisms and Translation to Novel Therapeutics B405 11:30 AM–1:00 PM EDT	ORAL SESSIONS: Thyroid Neoplasia and Cancer B407 11:30 AM–1:00 PM EDT		PROFESSIONAL DEVELOPMENT WORKSHOP: Funding Your Research Grantwriting Workshop A315-A316 11:30 AM–1:00 PM EDT
MEET THE SCIENTIST: My Path to a Career in Academic Research Studying Signal-Regulated Gene Expression B405 2:00–2:45 PM EDT		MEET THE PROFESSOR: PCOS Across Lifespan A315-A316 2:00–2:45 PM EDT		PLENARY: Health Equity in Endocrinology Hall A3 2:00–3:30 PM EDT	
		MEET THE SCIENTIST: My Path to a Career Studying Uterine Development and Function B405 3:15–4:00 PM EDT	MEET THE PROFESSOR: Molecular Diagnosis of Indeterminate Thyroid Nodules A404-A405 3:15–4:00 PM EDT		ENDOCRINE EDUCATORS FORUM: How Faculty Bias Impacts the Evaluation of Learners A411 3:15–4:00 PM
SYMPOSIUM: Location, Location, Location: Advances in Spatial Regulation and Hormone Receptor Signaling B404 4:15–5:45 AM EDT SYMPOSIUM: Upstream and Downstream of NRs: Mechanisms in Inflammation and Metabolism B403 4:15–5:45 PM EDT	SYMPOSIUM: Challenges in Endocrine Medical Care for Adolescents on the Gender Spectrum A313-A314 4:15–5:45 PM EDT			DIVERSITY AND INCLUSION SYMPOSIUM: Increasing Diversity in Clinical Trials: Multiple Solutions to Achieve Clinical Trial Equity A411 4:15–5:45 PM EDT	PROFESSIONAL DEVELOPMENT WORKSHOP: The Business of Medicine: Surviving the First Year of Practice A408 4:15–5:45 PM EDT

SCHEDULE AT A GLANCE: SUNDAY, JUNE 12 8:00 AM–3:30 PM EDT

TIME	AGING, BONE, AND CALCIOTROPIC HORMONES	CARDIOVASCULAR AND LIPIDS	CLINICAL ADRENAL	CLINICAL PITUITARY	DIABETES AND OBESITY
8:00 AM					
8:15 AM					
8:30 AM					
8:45 AM					
9:00 AM					
9:15 AM	SYMPOSIUM: Effects of Nutrition and Prescription Drugs on Bone A404-A405 9:15–10:45 AM EDT	SYMPOSIUM: Hot Topics in Endocrine Hypertension A315-A316 9:15–10:45 PM EDT	SYMPOSIUM: HPA Axis Under Stress A411 9:15–10:45 AM EDT	SYMPOSIUM: Dissecting Pituitary Tumorigenesis B403 9:15–10:45 AM EDT	SYMPOSIUM: Advances in Human Islet Research to Optimize Translation to Diabetes Cures B404 9:15–10:45 AM EDT MASTER CLINICIAN: Weight Management in the Obese Child Hall A3 9:15–10:45 AM EDT
9:30 AM					
9:45 AM					
10:00 AM					
10:15 AM					
10:30 AM					
10:45 AM					
11:00 AM	ORAL SESSIONS: Osteoporosis and Metabolic Bone Diseases A411 11:00 AM–12:30 PM EDT				ORAL SESSIONS: Sugar and How We Grow B403 11:00 AM–12:30 PM EDT
11:15 AM					
11:30 AM					
11:45 AM					
12:00 AM					
12:15 AM					
12:30 AM					
12:45 AM					
1:00 PM					
1:15 PM					
1:30 PM		MEET THE PROFESSOR: Update on Genetic Causes of Hypercholesterolemia: What's New in the Evaluation and Treatment of These Hard to Treat Patients A315-A316 1:30–2:15 PM EDT PLENARY: Cardiovascular Health in Women: From Bench to Bedside Hall A3 1:30–2:30 PM EDT	MEET THE PROFESSOR: Hypercortisolism (Cushing's Syndrome): A Challenging Diagnosis and Management Disease A313-A314 1:30–2:15 AM EDT		MEET THE PROFESSOR: Time in Range–The New A1C? A404-A405 1:30–2:15 PM EDT MEET THE PROFESSOR: Electronic Tools to Help Patients During Their Weight Loss Journey A311-A312 1:30–2:15 PM EDT MEET THE SCIENTIST: My Path to a Career Studying Diet, Obesity, and Diabetes B405 1:30–2:15 PM EDT
1:45 PM					
2:00 PM					
2:15 PM					
2:30 PM					
2:45 PM					MEET THE PROFESSOR: Update on Medical Management of Obesity A412 2:45–3:30 PM EDT MEET THE PROFESSOR: Dilemmas in Diabetes Mellitus in Youth A313-A314 2:45–3:30 PM EDT
3:00 PM					
3:15 PM					
3:30 PM					

NUCLEAR AND MEMBRANE SIGNALING	PEDIATRICS AND GENETICS	REPRODUCTION AND NEUROENDOCRINOLOGY	THYROID, CANCER, AND NEOPLASIA	MISCELLANEOUS	PROFESSIONAL DEVELOPMENT
			PLENARY: Endocrine Society and American Cancer Society Converge in Atlanta Hall A3 8:00–9:00 AM EDT		
SYMPOSIUM: Signaling That Controls Primordial Follicle Activation B405 9:15–10:45 AM EDT		SYMPOSIUM: Disparities in Women's Health and Fertility A313-A314 9:15–10:45 AM EDT	SYMPOSIUM: Long Term Consequences of Hyperthyroidism and Its Treatment A311-A312 9:15–10:45 AM EDT SYMPOSIUM: Co-clinical Models to Interrogate Neo [Pro]plasia Models B407 9:15–10:45 AM EDT		ESAP Live A412 9:15–10:45 AM PROFESSIONAL DEVELOPMENT WORKSHOP: Effective Teaching Strategies A408 9:15–10:45 AM EDT
ORAL SESSIONS: Rocking Around the Cortex and Medulla A404-A405 11:00 AM–12:30 PM EDT ORAL SESSIONS: Hypothalamic Regulation of Reproduction B407 11:00 AM–12:30 PM EDT	ORAL SESSIONS: Genetic, Dietary, and Pharmacological Impact on Obesity A313-A314 11:00 AM–12:30 PM EDT	ORAL SESSIONS: It's All about Ovulation: The Impact of Genetics, Hormones, and Metabolism and Ovulatory Dysfunction B404 11:00 AM–12:30 PM EDT ENDOCRINE DEBATE: PCOS - Who is Really Driving the Bus? Hall A3 11:00 AM–12:30 PM EDT	ORAL SESSIONS: Mechanistic and Clinical Aspects of Benign Thyroid Disease A315-A316 11:00 AM–12:30 PM EDT ORAL SESSIONS: Insights on New Targets in Estrogen-dependent Cancer Regulation B405 11:00 AM–12:30 PM EDT		Publishing Skills Lab: Communications Challenge A311-A312 11:00 AM–12:30 PM EDT
	MEET THE PROFESSOR: Precocious Puberty: Evidence-Based Management B407 1:30–2:15 PM EDT	MEET THE PROFESSOR: Shifting Fluids: SIADH and DI A411 1:30–2:15 PM EDT			
	MEET THE PROFESSOR: Dilemmas in Diabetes Mellitus in Youth A313-A314 2:45–3:30 PM EDT MEET THE PROFESSOR: Novel Therapies in the Treatment of Congenital Hyperinsulinism A404-A405 2:45–3:30 PM EDT	MEET THE PROFESSOR: Beginner's Guide to Gender-Affirming Hormone Therapy for Transgender and Gender Diverse Adults A315-A316 2:45–3:30 PM EDT MEET THE SCIENTIST: My Path to a Career Studying the Female Brain and Cognitive Health B405 2:45–3:30 PM EDT	MEET THE PROFESSOR: What's Wrong With This Picture? Challenging Cases in Thyroid Ultrasound Imaging B407 2:45–3:30 PM EDT MEET THE PROFESSOR: MEN1 Across the Lifespan A311-A312 2:45–3:30 PM EDT Available on demand on June 8	MEET THE PROFESSOR: Doping with Androgens: Abuse of Androgenic Performance-Enhancing Drugs A404-A405 2:45–3:30 PM EDT MEET THE PROFESSOR: E-Consults: An Evolving Area of Endocrine Care A411 2:45–3:30 PM EDT	

SCHEDULE AT A GLANCE: SUNDAY, JUNE 12 3:45–6:30 PM EDT

TIME	AGING, BONE, AND CALCIOTROPIC HORMONES	CARDIOVASCULAR AND LIPIDS	CLINICAL ADRENAL	CLINICAL PITUITARY	DIABETES AND OBESITY
3:45 PM			SYMPOSIUM: Diagnosis and Pathogenesis of Adrenal Tumors A315-A316 3:45–5:15 PM EDT	SYMPOSIUM: Drugging the Pituitary: Impact of Commonly Used Drugs on Pituitary Function A411 3:45–5:15 PM EDT	SYMPOSIUM: The Time Has Come: Screening for and Preventing Type 1 Diabetes A404-A405 3:45–5:15 PM EDT
4:00 PM					
4:15 PM					
4:30 PM					
4:45 PM					
5:00 PM	All-attendee Social at the ENDOExpo ENDOExpo, Hall A1 & Hall A2 5:00–6:30 PM EDT				
5:15 PM					
5:30 PM					
5:45 PM					
6:00 PM					
6:15 PM					
6:30 PM					

ENDOCRINE SOCIETY AND MEDICAL LEARNING INSTITUTE, INC. PRESENT



BEYOND GLYCEMIC CONTROL: ENHANCING GLUCOSE METABOLISM AND ENERGY HOMEOSTASIS THROUGH DUAL AGONISM OF INCRETINS

**OMNI ATLANTA HOTEL
AT CNN CENTER**
GRAND BALLROOM E

SATURDAY, JUNE 11, 2022
6:00 PM - 9:00 PM EDT

AGENDA

- 6:00 PM – 6:30 PM REGISTRATION AND DINNER
- 6:30 PM – 8:00 PM INTERACTIVE SYMPOSIUM
 - ADDRESSING UNMET NEEDS IN T2D
 - DEMYSTIFYING THE EVOLVING SCIENCE BEHIND THE INCRETIN EFFECT
 - CLINICAL IMPLICATIONS OF DUAL AGONIST EFFICACY AND SAFETY DATA
 - PREVIEWS OF COMING ATTRACTIONS: NEW DUAL AND TRIPLE AGONISTS
 - KEY POINTS, Q&A, AND EVALUATION
- 8:00 PM – 9:00 PM ENGAGE60
 - NETWORKING, COFFEE, AND DESSERT WITH FACULTY

FACULTY



JUAN PABLO FRIAS, MD
MEDICAL DIRECTOR AND PRINCIPAL INVESTIGATOR
VELOCITY CLINICAL RESEARCH
LOS ANGELES, CA



ILDIKO LINGVAY, MD, MPH, MSCS
PROFESSOR OF MEDICINE
DEPARTMENT OF INTERNAL MEDICINE/ENDOCRINOLOGY
DEPARTMENT OF POPULATION AND DATA SCIENCES
MEDICAL DIRECTOR, OFFICE OF CLINICAL TRIALS MANAGEMENT
UT SOUTHWESTERN MEDICAL CENTER
DALLAS, TX



DAVID A. D'ALESSIO, MD
PROFESSOR OF MEDICINE
CHIEF, DIVISION OF ENDOCRINOLOGY AND METABOLISM
DUKE UNIVERSITY SCHOOL OF MEDICINE
DURHAM, NC

THIS ACTIVITY IS SUPPORTED BY AN EDUCATIONAL GRANT FROM LILLY.

1.50 AMA PRA CATEGORY 1 CREDITS™, 1.50 ABIM MOC POINTS, AND 1.50 AAPA CATEGORY 1 CME CREDITS.

NUCLEAR AND MEMBRANE SIGNALING	PEDIATRICS AND GENETICS	REPRODUCTION AND NEUROENDOCRINOLOGY	THYROID, CANCER, AND NEOPLASIA	MISCELLANEOUS	PROFESSIONAL DEVELOPMENT
SYMPOSIUM: Understanding the Structures and Dynamics of Hormone GPCR Signaling B404 3:45–5:15 PM EDT	SYMPOSIUM: Disorders of Pubertal Development A313-A314 3:45–5:15 PM EDT	SYMPOSIUM: Mechanisms of Oocyte Development B405 3:45–5:15 PM EDT SYMPOSIUM: Neuroendocrine Interface of Reproduction and Metabolism B403 3:45–5:15 PM EDT SYMPOSIUM: Novel Mechanisms of Reproductive Hormone Action B407 3:45–5:15 PM EDT	MASTER CLINICIAN: International Workshop on Primary Hyperparathyroidism and Hypoparathyroidism Hall A3 3:45–5:15 PM EDT SYMPOSIUM: When the Immune System Gets It Wrong! A311-A312 3:45–5:15 PM EDT		PROFESSIONAL DEVELOPMENT WORKSHOP: Resiliency and Managing Burnout A408 3:45–5:15 PM EDT



Exploring Perspectives in Obesity Management:

From Personal Experience to Best Practice

Program Agenda

6:30 – 6:35 PM	Welcome and Introduction Amy Rothberg, MD— Program Chair
6:35 – 7:35 PM	Interview Sessions Amy Rothberg, MD Domenica Rubino, MD Judy Korner, MD, PhD Patient
7:35 – 7:55 PM	Open Forum
7:55 – 8:00 PM	Summary and Close Amy Rothberg, MD



Omni Atlanta Hotel at CNN Center
 Grand Ballroom, North Tower M4

Monday, June 13, 2022

6:00 – 6:30 PM Registration and Dinner
 6:30 – 8:00 PM Symposium

Learning Objectives

- Upon completion of this activity, participants will be better able to:
- Describe hormonal and metabolic adaptations to weight loss, and physiological appetite regulation processes that inhibit long-term weight management
 - Discuss the relationship between obesity and related comorbid conditions
 - Explain the benefits and limitations of available guideline-recommended weight management approaches
 - Recognize challenges faced by people living with obesity, leading to implementation of individualized sustainable weight management approaches

Registration

Registration for this activity is available at

<https://endo2022.endocrine.org/Registration>

CME Credits:

1.5 AMA PRA Category 1 Credits™
 1.5 ABIM MOC Points

Supported by an educational grant from Novo Nordisk, Inc.



Provided by the Institute for Medical and Nursing Education, Inc.
 and The Endocrine Society



SCHEDULE AT A GLANCE: MONDAY, JUNE 13 8:00 AM–2:30 PM EDT

TIME	AGING, BONE, AND CALCIOTROPIC HORMONES	CARDIOVASCULAR AND LIPIDS	CLINICAL ADRENAL	CLINICAL PITUITARY	DIABETES AND OBESITY
8:00 AM					
8:15 AM		MEET THE PROFESSOR: PCSK-9 Inhibitors: Basic Biology to Clinical Outcomes A315-A316 8:15–9:00 AM EDT	MEET THE PROFESSOR: Pheochromocytoma/Paraganglioma: Diagnosis and Perisurgical Management A313-A314 8:15–9:00 AM EDT	MEET THE PROFESSOR: Aggressive Corticotroph (or Pituitary) Tumors B407 8:15–9:00 PM EDT	MEET THE PROFESSOR: Long Term Follow-Up of Bariatric Surgery in Adolescents A311-A312 8:15–9:00 AM EDT
8:30 AM					
8:45 AM					
9:00 AM					
9:15 AM	SYMPOSIUM: Rockin' Heavy Metal: Iron Effects in the Bone A315-A316 9:15–10:45 AM EDT				ENDOCRINE DEBATE: Should Weight Management Be a Primary Treatment Goal for Type 2 Diabetes? Hall A3 9:15–10:45 AM EDT SYMPOSIUM: Very Low Calorie Ketogenic Diets Beyond Obesity A412 9:15–10:45 AM EDT SYMPOSIUM: Tech Check for Diabetes: Use of New Technologies in the Management of Persons With Diabetes A313-A314 9:15–10:45 AM EDT
9:30 AM					
9:45 AM					
10:00 AM					
10:15 AM					
10:30 AM					
10:45 AM					
11:00 AM		ORAL SESSIONS: New Advances on Primary Aldosteronism and the Role of the RAAS in Cardiovascular Health A404-A405 11:00 AM–12:30 PM EDT			GUIDELINE SESSION: Management of Hyperglycemia in Hospitalized Patients in Non-Critical Care Settings: An Endocrine Society Clinical Practice Guideline A315-A316 11:00 AM–12:30 PM EDT LATE BREAKING ORAL SESSION Tools and Targets in Basic Endocrinology Research A412 11:00 AM–12:30 PM ORAL SESSIONS: Molecular Mechanisms Controlling Energy Balance and the Development of Obesity B403 11:00 AM–12:30 PM EDT ORAL SESSIONS: Multi-tissue Signaling Pathways Involved in Diabetes Pathogenesis B404 11:00 AM–12:30 PM EDT
11:15 AM					
11:30 AM					
11:45 AM					
12:00 AM					
12:15 AM					
12:30 AM					
12:45 AM					
1:00 PM					
1:15 PM					
1:30 PM			MEET THE PROFESSOR: Below the Tip of the Iceberg: Just How Much Aldosterone is Out There? A313-A314 1:30–2:15 PM EDT		
1:45 PM					
2:00 PM					
2:15 PM					
2:30 PM					

NUCLEAR AND MEMBRANE SIGNALING	PEDIATRICS AND GENETICS	REPRODUCTION AND NEUROENDOCRINOLOGY	THYROID, CANCER, AND NEOPLASIA	MISCELLANEOUS	PROFESSIONAL DEVELOPMENT
		PLENARY: Intersex, Transgender, Exercise in Endocrinology Hall A3 8:00–9:00 AM EDT			
		MEET THE PROFESSOR: Diagnosis and Therapy in Male Hypogonadism B405 8:15–9:00 AM EDT			
SYMPOSIUM: Nuclear Receptors in Immunometabolism: It's Not Just Macrophages! B403 9:15–10:45 AM EDT SYMPOSIUM: Steroidogenesis and Androgen Actions B407 9:15–10:45 AM EDT	SYMPOSIUM: From Sweet to Sour: Impact of Gestational Diabetes on Offspring A404-A405 9:15–10:45 PM EDT	SYMPOSIUM: The Aging Female Brain B405 9:15–10:45 AM EDT SYMPOSIUM: The Hormonal Impact on Endometriosis – The Unseen Disease of Reproduction A411 9:15–10:45 AM EDT	SYMPOSIUM: Optimal Thyroid Hormone Replacement Therapy A311-A312 9:15–10:45 AM EDT SYMPOSIUM: Oncogenic Amnesia: Lineage Plasticity as Mechanism of Resistance in Endocrine-Related Cancers B404 9:15–10:45 AM EDT		The Entrepreneurial Side of Science and Medicine A408 9:15–10:45 AM EDT
ORAL SESSIONS: Unconventional Modulation: Post-transcriptional, Metabolite, and Co-Chaperone Influences on Steroid Receptor Function B407 11:00 AM–12:30 PM EDT	ORAL SESSIONS: Puberty and Growth A311-A312 11:00 AM–12:30 PM EDT	ENDOCRINE DEBATE: PCOS - Who is Really Driving the Bus? Hall A3 11:00 AM–12:30 PM EDT ORAL SESSIONS: Molecular Mechanisms of Male Reproductive Tract Development and Effects of Testosterone Therapies on Health and Reproduction B405 11:00 AM–12:30 PM EDT	ENDOCRINE DEBATE: Low Risk Thyroid Cancer Hall A3 11:00 AM–12:30 PM EDT ORAL SESSIONS: Advances in Thyroid Basic and Translational Research A313-A314 (11:00 AM–12:30 PM EDT) ORAL SESSIONS: Parathyroid Hormone Mechanisms of Action A411 11:00 AM–12:30 PM EDT		PROFESSIONAL DEVELOPMENT WORKSHOP: Maximizing the Mentor and Mentee Relationship A408 11:00 AM–12:30 PM EDT
	SAWIN LECTURE: Clark T. Sawin Memorial History of Endocrinology Lecture: Greek Medical Philosophy and the Roots of Modern Endocrinology A311-A312 1:30–2:15 PM EDT	PLENARY: Addressing Challenges in Fertility and Reproduction Hall A3 1:30 - 2:30 PM EDT	MEET THE PROFESSOR: Unmet Needs in Hypothyroidism A315-A316 1:30–2:15 PM EDT		

SCHEDULE AT A GLANCE: MONDAY, JUNE 13 2:45 AM–6:15 PM EDT

TIME	AGING, BONE, AND CALCITROPIC HORMONES	CARDIOVASCULAR AND LIPIDS	CLINICAL ADRENAL	CLINICAL PITUITARY	DIABETES AND OBESITY
2:45 PM				MEET THE PROFESSOR: Controversies in the Field of Acromegaly A404-A405 2:45–3:30 PM EDT	
3:00 PM					
3:15 PM				MEET THE PROFESSOR: Management of Non-Secretory Pituitary Tumors When Surgery Fails A411 2:45–3:30 PM EDT	
3:30 PM					
3:45 PM	SYMPOSIUM: Emerging Concepts in Vitamin D: Immunity, Metabolism and Addiction A411		YEAR IN REVIEW: Clinical Year in Review: All Things Adrenal Hall A3 3:45–4:30 PM EDT		SYMPOSIUM: Novel Aspects in Incretin and Glucagon Biology: From Basic to Clinical Applications A313-A314 3:45–5:15 PM EDT
4:00 PM					
4:15 PM					
4:30 PM					
4:45 PM	3:45–5:15 PM EDT				
5:00 PM			SYMPOSIUM: Congenital Adrenal Hyperplasia, What's NEW? A311-A312 3:45–5:15 PM EDT		SYMPOSIUM: PCOS and Metabolic Consequences—The Skinny on Adipocytes B404 3:45–5:15 PM EDT
5:15 PM	Basic Science Reception Basic Science Pavilion, B401				
5:30 PM					
5:45 PM	5:15–6:15 PM EDT				
6:00 PM					
6:15 PM					



BECOME A MEMBER!

We are your colleagues, mentors, innovators, and champions throughout your career. Join the Endocrine Society today and access vital tools and resources that will help you make your greatest impact on the field of endocrinology.

[ENDOCRINE.ORG/JOIN](https://endocrine.org/join)

ENDOCRINE
SOCIETY



NUCLEAR AND MEMBRANE SIGNALING	PEDIATRICS AND GENETICS	REPRODUCTION AND NEUROENDOCRINOLOGY	THYROID, CANCER, AND NEOPLASIA	MISCELLANEOUS	PROFESSIONAL DEVELOPMENT
YEAR IN REVIEW: Year In Nuclear Receptors Hall A3 2:45–3:30 PM EDT	MEET THE PROFESSOR: Approach to Fractures in Children A313-A314 2:45–3:30 PM EDT MEET THE PROFESSOR: Approach to Pediatric Lipid Disorders A311-A312 2:45–3:30 PM EDT		MEET THE PROFESSOR: Management of Hereditary Medullary Thyroid Cancer A315-A316 2:45–3:30 PM EDT		
SYMPOSIUM: Noncanonical Hormone Signaling in Cardiovascular Diseases B405 3:45–5:15 PM EDT SYMPOSIUM: Digging Deeper: Use of Omics to Improve Therapy B403 3:45–5:15 PM EDT	SYMPOSIUM: Racial and Ethnic Disparities in Adolescent Healthcare A315-A316 3:45–5:15 PM EDT	SYMPOSIUM: Spermatogenesis: Targets for Fertility and Contraception B407 3:45–5:15 PM EDT	SYMPOSIUM: Advances in Thyroid Cancer A412 3:45–5:15 PM EDT		PROFESSIONAL DEVELOPMENT WORKSHOP: Rigor and Reproducibility A408 3:45–5:15 PM EDT



1.5 AMA PRA Category 1 Credit™, 1.5 ABP MOC Points

Advancing the Science in Pediatric Achondroplasia

Sunday 12th June, 6:30 – 8:30 PM EDT

Omni Atlanta Hotel, Grand Ballroom North Tower M4



Andrew Dauber, MD
Chair

Children's National Hospital,
Washington D.C



Nadia Merchant, MD
Speaker

Children's National Hospital,
Washington D.C



Aristides Maniatis, MD
Speaker

Rocky Mountain Pediatric
Endocrinology, Colorado

This symposium will explore the natural history of, the clinical challenges to, and role of the FGFR3 gene in, pediatric achondroplasia. World renowned experts will highlight best practices in collaborative care, novel treatments, and disease-specific tools to monitor children with achondroplasia, to advance and improve patient care.

This continuing medical education activity is provided by



Educational partner
SCIENCE COLLECTED

This activity is supported by an unrestricted educational grant from BioMarin Pharmaceuticals

SCHEDULE AT A GLANCE: TUESDAY, JUNE 14 8:00 AM–1:00 PM EDT

TIME	AGING, BONE, AND CALCIOTROPIC HORMONES	CARDIOVASCULAR AND LIPIDS	CLINICAL ADRENAL	CLINICAL PITUITARY	DIABETES AND OBESITY
8:00 AM				SYMPOSIUM: Pituitary Dysfunction: Beyond Pituitary Tumors A311-A312 8:00–9:30 AM EDT	SYMPOSIUM: Weight Maintenance After Weight Loss A315-A316 8:00–9:30 AM EDT
8:15 AM					
8:30 AM					
8:45 AM					
9:00 AM					
9:15 AM					SYMPOSIUM: The Gut Microbiome and Metabolism B404 8:00–9:30 AM EDT SYMPOSIUM: Transitions in Care From Pediatric to Adult Endocrinology A313-A314 8:00–9:30 AM EDT SYMPOSIUM: It's Time to Take Things Personally: Individualized Care in Diabetes A404-A405 8:00–9:30 AM EDT
9:30 AM					
9:45 AM			LATE BREAKING ORAL SESSION: Clinical and Translational Studies A412 9:45–11:15 AM EDT	MEET THE PROFESSOR: Management of Non-secretory Pituitary Tumors When Surgery Fails A411 9:45–10:30 AM EDT ORAL SESSIONS: Advances in Understanding Pathophysiology and Management of Hypothalamo-pituitary Disease A313-A314 9:45–11:15 AM EDT	MEET THE PROFESSOR: Closed Loop Insulin Delivery A404-A405 9:45–10:30 AM EDT ORAL SESSIONS: Understanding Disparities in Diabetes Clinical Care: implications for Technology Use, Response to Medication Therapy, and Risk of Complications A315-A316 9:45–11:15 AM EDT
10:00 AM					
10:15 AM					
10:30 AM					
10:45 AM					
11:00 AM					
11:15 AM					
11:30 AM	SYMPOSIUM: The Osteocalcin Controversy A311-A312 11:30 AM–1:00 PM EDT	SYMPOSIUM: Advances and Novel Perspectives in Mineralocorticoid Receptor Antagonism A315-A316 11:30 AM–1:00 PM EDT			SYMPOSIUM: Optimizing Fat Burning - Non-Canonical Mechanisms of Adipose Thermogenesis B405 11:30 AM–1:00 PM EDT
11:45 AM					
12:00 AM					
12:15 AM					
12:30 AM					
12:45 AM					
1:00 PM					

NUCLEAR AND MEMBRANE SIGNALING	PEDIATRICS AND GENETICS	REPRODUCTION AND NEUROENDOCRINOLOGY	THYROID, CANCER, AND NEOPLASIA	MISCELLANEOUS	PROFESSIONAL DEVELOPMENT
SYMPOSIUM: It Takes Guts to Regulate Nuclear Receptors - Testing Your Mettle! B403 8:00–9:30 AM EDT		SYMPOSIUM: Developmental Origins of the Endometrium: Omics From Within the Cradle B407 8:00 AM–9:30 AM EDT			PROFESSIONAL DEVELOPMENT WORKSHOP: Building Your Personal Brand Through Social Media A408 8:00–9:30 AM EDT
		SYMPOSIUM: Recent Advances in Gonadotropin Signaling and Therapy B405 8:00 AM–9:30 AM EDT			
		MEET THE PROFESSOR: The Adolescent with Primary Ovarian Insufficiency: Protecting Long-Term Health - Management Strategies for Primary Ovarian Insufficiency in Adolescence A412 9:45–10:30 AM EDT	MEET THE PROFESSOR: What is New in Treatment of Differentiated Thyroid Cancer B404 9:45–10:30 AM EDT ORAL SESSIONS: Treatment Resistance and Outcomes in Breast Cancer: Newly Identified Regulatory Pathways B405 9:45–11:15 AM EDT		PROFESSIONAL DEVELOPMENT WORKSHOP: Practical Advice for Foreign Medical Graduates or Scientists Planning to Come or Stay in the USA: Navigating the US Visa System A408 9:45–11:15 AM EDT
		SYMPOSIUM: Fill 'er Up! Satiety and Satiety Mechanisms B407 11:30 AM–1:00 PM EDT	SYMPOSIUM: Impact of Diet and Obesity-Modulated Signaling in Breast Cancer: Causal Biology and Therapeutic Opportunities B403 11:30–1:00 PM EDT		
		SYMPOSIUM: Advances in Our Understanding of Intersex Conditions A313-A314 11:30 AM–1:00 PM EDT			

PROGRAM AND EVENTS

ANCILLARY SMYPOSIA

SATURDAY, JUNE 11

8:00 AM–7:00 PM EDT
ENDOCRINE NURSES SYMPOSIUM
B408-B409

6:00–9:00 PM EDT
BEYOND GLYCEMIC CONTROL:
ENHANCING GLUCOSE METABOLISM
AND ENERGY HOMEOSTASIS
THROUGH DUAL AGONISM OF
INCRETINS

Grand Ballroom, North Tower M4, Omni Hotel

CME Credits: 1.5 AMA PRA Credits and
1.5 ABIM MOC Points

Supporter: Lilly USA, LLC

SUNDAY, JUNE 12

6:30 PM–8:30 PM EDT
ADVANCING THE SCIENCE IN
PEDIATRIC ACHONDROPLASIA

Grand Ballroom, North Tower M4, Omni Hotel

CME Credits: 1.5 AMA PRA Credits and
1.5 ABIM MOC Points

Supporter: BioMarin Pharmaceutical Inc.

MONDAY, JUNE 13

6:00–8:00 PM EDT
EXPLORING PERSPECTIVES IN
OBESITY MANAGEMENT: FROM
PERSONAL EXPERIENCE TO BEST
PRACTICE

Grand Ballroom, North Tower M4, Omni Hotel

CME Credits: 1.5 AMA PRA Credits and
1.5 ABIM MOC Points

Supporter: Novo Nordisk Inc.

COMMUNICATIONS AND CAREER CENTER

SATURDAY, JUNE 11

11:00 AM–12:00 PM EDT
HORIZON THERAPEUTICS
SPONSORED SESSION

1:00–2:00 PM EDT
SCIENTIFIC STATEMENT:
CONSIDERING SEX AS A BIOLOGICAL
VARIABLE / EXTRACELLULAR
VESICLES AND THEIR EMERGING
ROLES AS CELLULAR MESSENGERS

2:15–3:15 PM EDT
HEALTH DISPARITIES POSTER
PREVIEWS

3:15–4:00 PM EDT
JCEM CASE REPORTS
PLUS Q&A WITH BILL YOUNG

SUNDAY, JUNE 12

11:15 AM–12:15 PM EDT
HOT TOPIC SESSION:
CLOSED LOOP SYSTEM

12:30–1:30 PM EDT
SCIENTIFIC STATEMENT:
HORMONES AND AGING

1:45–4:00 PM EDT
KNOCKOUT ROUNDS

MONDAY, JUNE 13

2:00–2:15 PM EDT
ENDOCARES GRASSROOTS
ADVOCACY

2:15–3:00 PM EDT
ADVOCACY ACCOMPLISHMENT/
HOW TO GET INVOLVED

2:30–2:45 PM EDT
EDC ADVOCACY

2:45–3:00 PM EDT
INSULIN AFFORDABILITY

3:00–3:15 PM EDT
NIH FUNDING

3:15–4:00 PM EDT
FURTHER ADVOCACY

RECEPTIONS

FRIDAY, JUNE 10

6:00–8:00 PM EDT
ALL-SIG RECEPTION
(BY INVITATION)

College Football Hall of Fame

The Endocrine Society designed this by-invitation-only event to recognize and celebrate the work of our SIG members dedicated to advancing the Society's mission to accelerate scientific breakthroughs and improve health worldwide.

7:00–9:00 PM EDT
THE ENDO 2022 ASSOCIATION
OF ENDOCRINE CHIEFS AND
DIRECTORS RECEPTION (ADDITIONAL
REGISTRATION REQUIRED)

International Ballroom C, North Tower M2,
Omni Hotel

Join today's leaders in the field of endocrinology for an evening of learning and camaraderie at the ENDO 2022 Association of Endocrine Chiefs and Directors Reception. Open for registration to all ENDO 2022 in-person attendees will offer guests the chance to catch up with old colleagues and make new acquaintances during a lively, thought-provoking evening that will blend light bites, drinks, networking, and an engaging speaker.

SATURDAY, JUNE 11

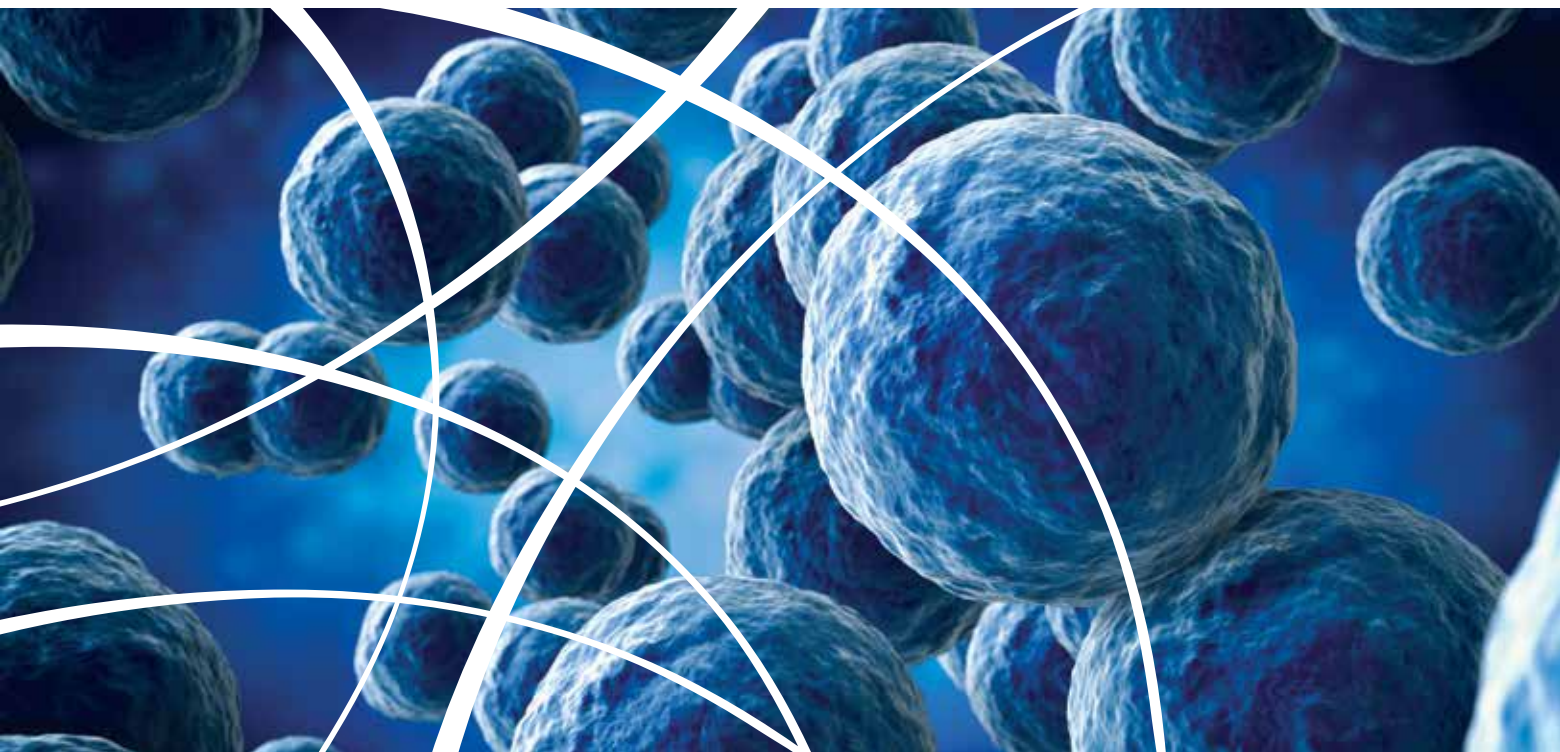
1:00–3:00 PM EDT
POSTER HALL MEET AND GREET
Hall A1 & Hall A2

Take in nearly 1,100 scientific abstracts and connect with authors in this meet and greet session dedicated to all things endocrine research.

5:30–7:30 PM EDT
WOMEN IN ENDOCRINOLOGY
NETWORKING RECEPTION
(ADDITIONAL REGISTRATION
REQUIRED)

International Ballroom, North Tower M2,
Omni Hotel

This will be an onsite, in person networking reception for interested ENDO 2022 attendees. This reception is for networking and connecting with colleagues over light refreshments.



5:45–6:45 PM EDT
BASIC SCIENCE RECEPTION
B401

Enjoy beer, wine, non-alcoholic beverages, and light appetizers while you mix and mingle with your basic science colleagues in the Basic Science Pavilion. No matter what your scientific focus, all are welcome at this basic science social event at ENDO 2022.

SUNDAY, JUNE 12
12:30–2:30 PM EDT
POSTER HALL MEET AND GREET
Hall A1 & Hall A2

Take in nearly 1,100 scientific abstracts and connect with authors in this meet and greet session dedicated to all things endocrine research.

5:00–6:30 PM EDT
ALL-ATTENDEE SOCIAL
AT THE ENDOEXPO
Hall A1 & Hall A2

After more than two years of connecting onscreen, it is time to gather (safely) for the first-ever ENDO All-attendee Social. During this spirited, happy hour-style affair, ENDO 2022 attendees and exhibitors will have the chance to mix, mingle, and enjoy looking back and planning ahead in a fun, relaxed environment.

5:00–6:30 PM EDT
LGBTQIA+ALLIES RECEPTION
Communications & Career Center,
ENDOExpo Booth

This networking reception will take place during the All-Attendee Social is open to anyone interested in connecting with endocrine professionals and advocates in the LGBTQIA community.

MONDAY, JUNE 13
12:30–2:30 PM EDT
POSTER HALL MEET AND GREET
Hall A1 & Hall A2

Take in nearly 1,100 scientific abstracts and connect with authors in this meet and greet session dedicated to all things endocrine research.

5:15–6:15 PM EDT
BASIC SCIENCE RECEPTION
B401

Enjoy beer, wine, non-alcoholic beverages, and light appetizers while you mix and mingle with your basic science colleagues in the Basic Science Pavilion. No matter what your scientific focus, all are welcome at this basic science social event at ENDO 2022.

7:00–9:00 PM EDT
PRESIDENT'S RECEPTION
(BY INVITATION)
Civil and Human Rights Museum

The Endocrine Society designed this by-invitation-only event to recognize and celebrate the work of member leaders in a variety of roles across the organization who have shared their time and talent in an effort to advance the Society's mission to accelerate scientific breakthroughs and improve health worldwide.

PRODUCT THEATERS

SATURDAY, JUNE 11

9:45–10:30 AM EDT

PRODUCT THEATER 1

Importance of Screening and Staging in Type 1 Diabetes: How to Have a Productive Conversation About Screening for T1D

Provention Bio

PRODUCT THEATER 2

An Individualized Approach to Oral Testosterone Replacement Therapy

Clarus Therapeutics

PRODUCT THEATER 3

Managing Patients with Hypoparathyroidism: A Healthcare Professional and Patient Partnership

Ascendis Pharma A/S

1:15–2:00 PM EDT

PRODUCT THEATER 1

Evolution of Thyroid Eye Disease (TED) Treatment: Translating Bench to Bedside

Horizon Therapeutics

PRODUCT THEATER 2

Product Theater Discovery Forum presented by Quidel

Quidel

PRODUCT THEATER 3

Product Theater Discovery Forum presented by Tolmar Pharmaceuticals

Tolmar Pharmaceuticals

3:00–3:45 PM EDT

PRODUCT THEATER 1

Managing Patients with Cushing's Disease

Recordati Rare Diseases

PRODUCT THEATER 2

Goal Directed Therapy for Osteoporosis

Amgen

PRODUCT THEATER 3

Product Theater Discovery Forum presented by Medtronic

Medtronic

SUNDAY, JUNE 12

9:15–10:00 AM EDT

PRODUCT THEATER 1

Consistent Control for Patients with Acromegaly

Amryt Pharma

PRODUCT THEATER 2

SKYTROFA (lonapegsomatropin-tcgd):

The First FDA-approved, Once-weekly Treatment for Pediatric Growth Hormone Deficiency

Ascendis Pharma A/S

PRODUCT THEATER 3

Reframing Expectations in Cushing's Syndrome

Xeris BioPharma

12:45–1:30 PM EDT

PRODUCT THEATER 1

Dexcom G6: The iCGM That Keeps You Connected

Dexcom Inc.

PRODUCT THEATER 2

The Recognition, Significance, and Contemporary Approach to Diagnosis of Hypercortisolemia in all its Forms

Corcept Therapeutics Inc.

PRODUCT THEATER 3

Product Theater Discovery Forum presented by Pfizer Inc.

Pfizer Inc.

2:45–3:30 PM EDT

PRODUCT THEATER 1

Product Theater Discovery Forum presented by Alexion, AstraZeneca Rare Disease

Alexion, AstraZeneca Rare Disease

PRODUCT THEATER 2

Adrenocortical Carcinoma Management: Practical Tips for Mitotane Therapy

HRA Pharma Rare Disease

PRODUCT THEATER 3

Effectively Raising Serum Total 25-Hydroxyvitamin D in Overweight Patients

OPKO Health, Inc.

MONDAY, JUNE 13

9:15–10:00 AM EDT

PRODUCT THEATER 1

Product Theater Discovery Forum presented by BioMarin Pharmaceutical Inc.

BioMarin Pharmaceutical Inc.

PRODUCT THEATER 2

Clinical Performance of the Afirma Genomic Sequencing Classifier: Real World Experience and the Optimization of Thyroid Nodule Management

Veracyte, Inc.

PRODUCT THEATER 3

Introduction to Rare Genetic Diseases of Obesity

Rhythm Pharmaceuticals, Inc.

12:45–1:30 PM EDT

PRODUCT THEATER 1

Ultra Rapid-Acting Inhaled Insulin for Diabetes Management

MannKind Corporation

PRODUCT THEATER 2

Understanding the Patient with Persistent Symptoms

Acella Pharmaceuticals

PRODUCT THEATER 3

Clinician and Patient Insights on Obesity and Hyperphagia in Bardet-Biedl Syndrome (BBS)

Rhythm Pharmaceuticals, Inc.

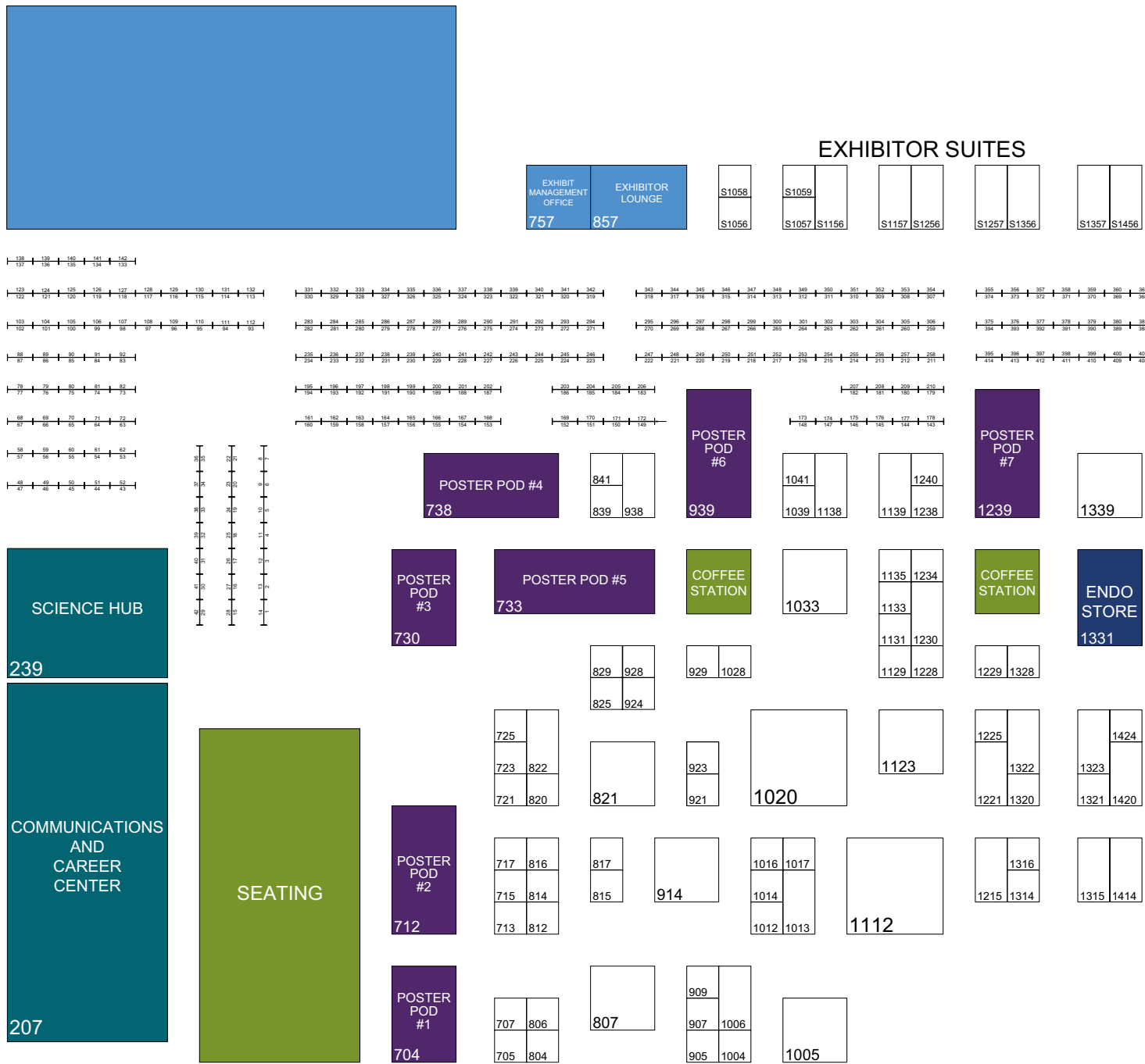
ENDOEXPO EXHIBITOR LIST

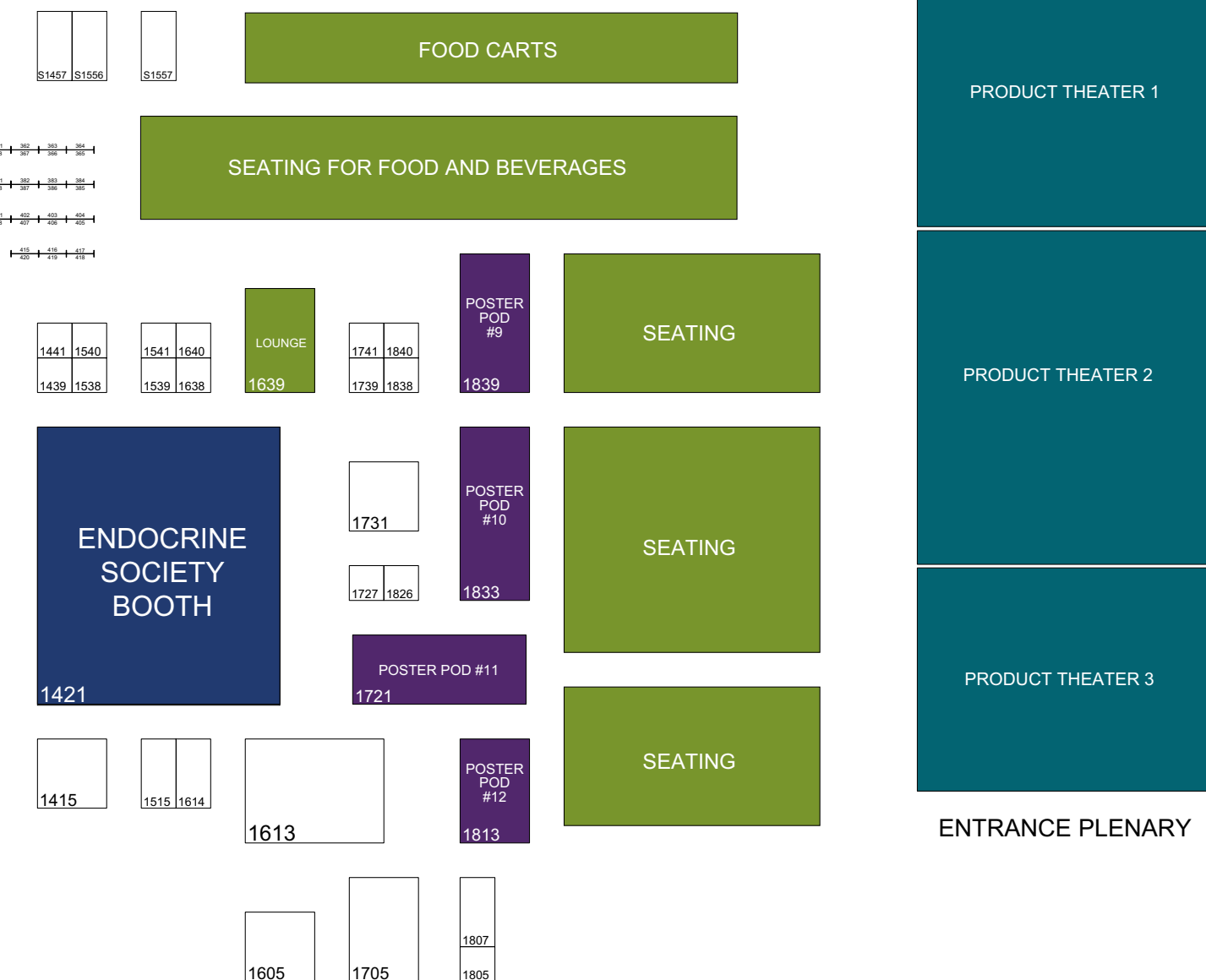
AS OF MAY 24, 2022.

COMPANY	BOOTH NUMBER	E-F	O-Q
A-B		Eagles Landing Health 1135	OPKO Health, Inc. 1826
Abbvie Inc.	1230	Edward Elmhurst Hospital and Health Services 705	Pfizer Inc. 1020
Accredo	1229	Eiger BioPharmaceuticals 1240	Pheo Para Alliance 905
Acella Pharmaceuticals	1131	EKF Diagnostics 1028	Precision Analytical, Inc. 1133
Alexion, AstraZeneca Rare Disease	1006	Elsevier 921	PreventionGenetics 804
ALZET® Osmotic Pumps/DURECT Corporation	1017	Endo Pharmaceuticals, Inc. 1614	Progenics, a Lantheus Company 1739
American Thyroid Association	1838	Endocrine Society 1421	Provention Bio 812
Amneal Pharmaceuticals, Inc.	1013	Endocrine Society ENDO Store 1331	Quest Diagnostics 1424
Amryt Pharma	1605	Esaote North America 1321	Quidel 928
Antares Pharma, Inc.	914	European Society of Endocrinology (ESE) 1638	
Ascendis Pharma A/S	1415	R-S	
Ascendis Pharma A/S	1515		Recordati Rare Diseases Inc. 821
Astellas Pharma US, Inc	1041	G-J	Regeneron Pharmaceuticals 1339
The Association for the Program Directors in Diabetes, Endocrinology, Metabolism (APDEM)	1540	Horizon Therapeutics 1112	Research Diets, Inc. 929
Baptist Health Medical Group	723	Horizon Therapeutics 1215	RGS Healthcare 1016
BigFoot BioMedical	1225	Horizon Therapeutics 1323	Rhythm Pharmaceuticals 717
Billings Clinic	1805	HRA Pharma Rare Diseases 1221	Rhythm Pharmaceuticals 816
BioMarin Pharmaceutical Inc.	815	HypoPARAthyroidism Association 923	Sable Systems International, Inc. 1316
BioMarin Pharmaceutical Inc.	817	Ibsa Pharma Inc. 807	Salix Pharmaceuticals, Inc. 909
Bioscientifica	1228	Ideal Protein of America 1807	Science Hub 239
BridgeBio	1014	Immunovant, Inc. 1139	Sonic Healthcare USA 1314
C-D		Intermountain Healthcare 814	Springer Nature 1012
CARES Foundation, Inc.	1234	Interpace Diagnostics 1328	Spruce Biosciences 1538
Clarus Therapeutics	1731	IPSEN Biopharmaceuticals, Inc. 1004	
Clickview Corporation	1539	K-L	
Columbus Instruments	1129	LabCorp 713	Taewoong Medical USA 1441
Communications Center/ Career Center	207	Lilly USA 1420	Thermo Fisher Scientific 907
Corcept Therapeutics	1322	Lumos Pharma 839	Tolmar Pharmaceuticals Inc. 825
Cox Health	1727	M-N	
Crinetics Pharmaceuticals, Inc.	822	MannKind Corporation 1033	Topcon Healthcare 1320
Cushing's Support & Research Foundation	924	Medtronic 1414	Ultragenyx Pharmaceutical, Inc. 1315
Defense Health Agency Civilian Medical Corps	1039	National Adrenal Diseases Foundation (NADF) 1439	Veracyte, Inc. 1238
Dexcom Inc.	1123	National Institute of Environmental Health Sciences 1138	Wellstar Health System 715
Dreamed Diabetes	820	Neurocrine Biosciences, Inc. 938	Xeris BioPharma 1005
		Norton Medical Group 806	
		Novo Nordisk Healthcare AG 1705	
		Novo Nordisk Inc. 1613	

ENDOEXPO FLOOR PLAN

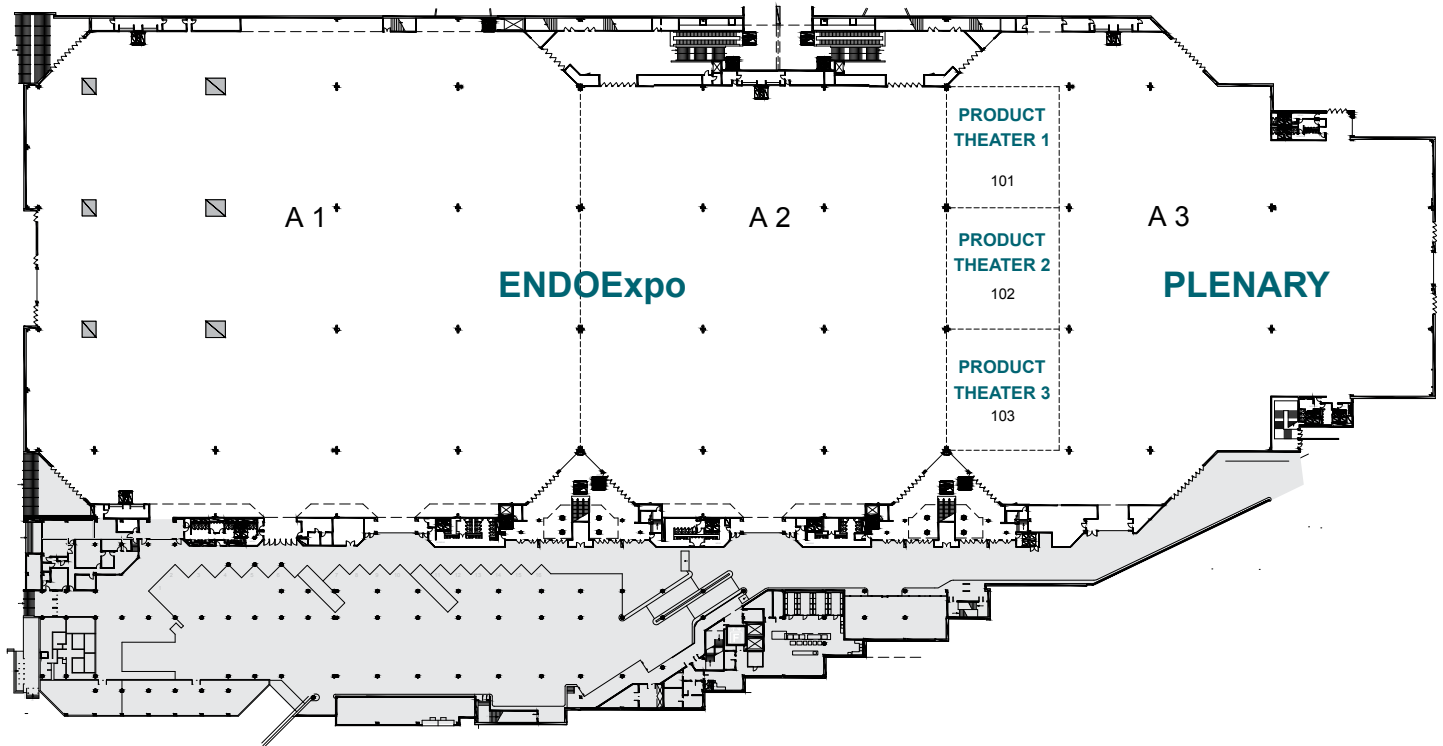
JUNE 11-14, 2022 GEORGIA WORLD CONGRESS CENTER, BUILDING A LEVEL 1 A1-A3 ATLANTA, GA



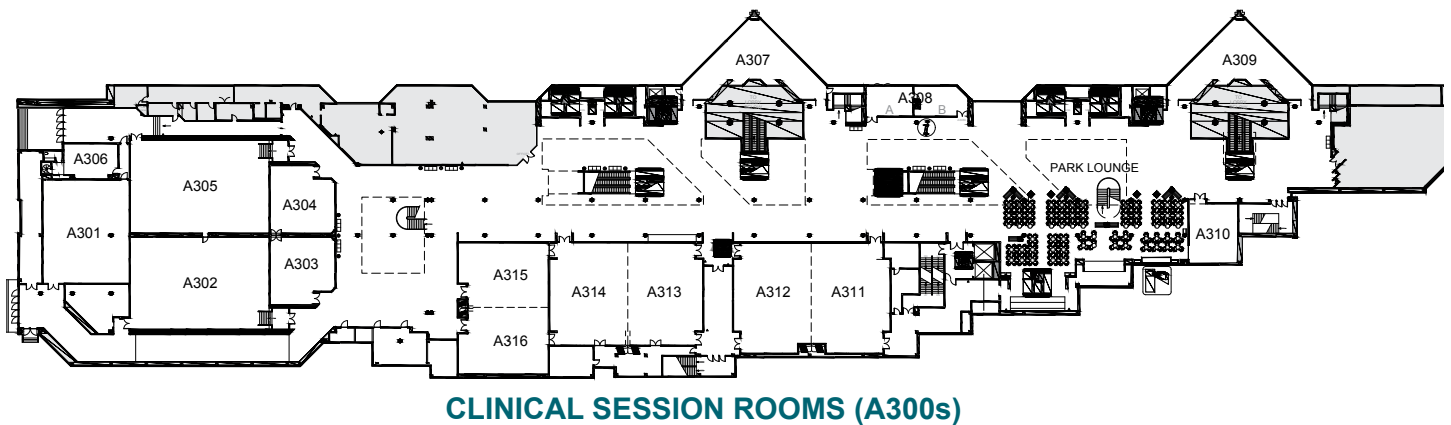


GEORGIA WORLD CONGRESS CENTER FLOOR PLANS

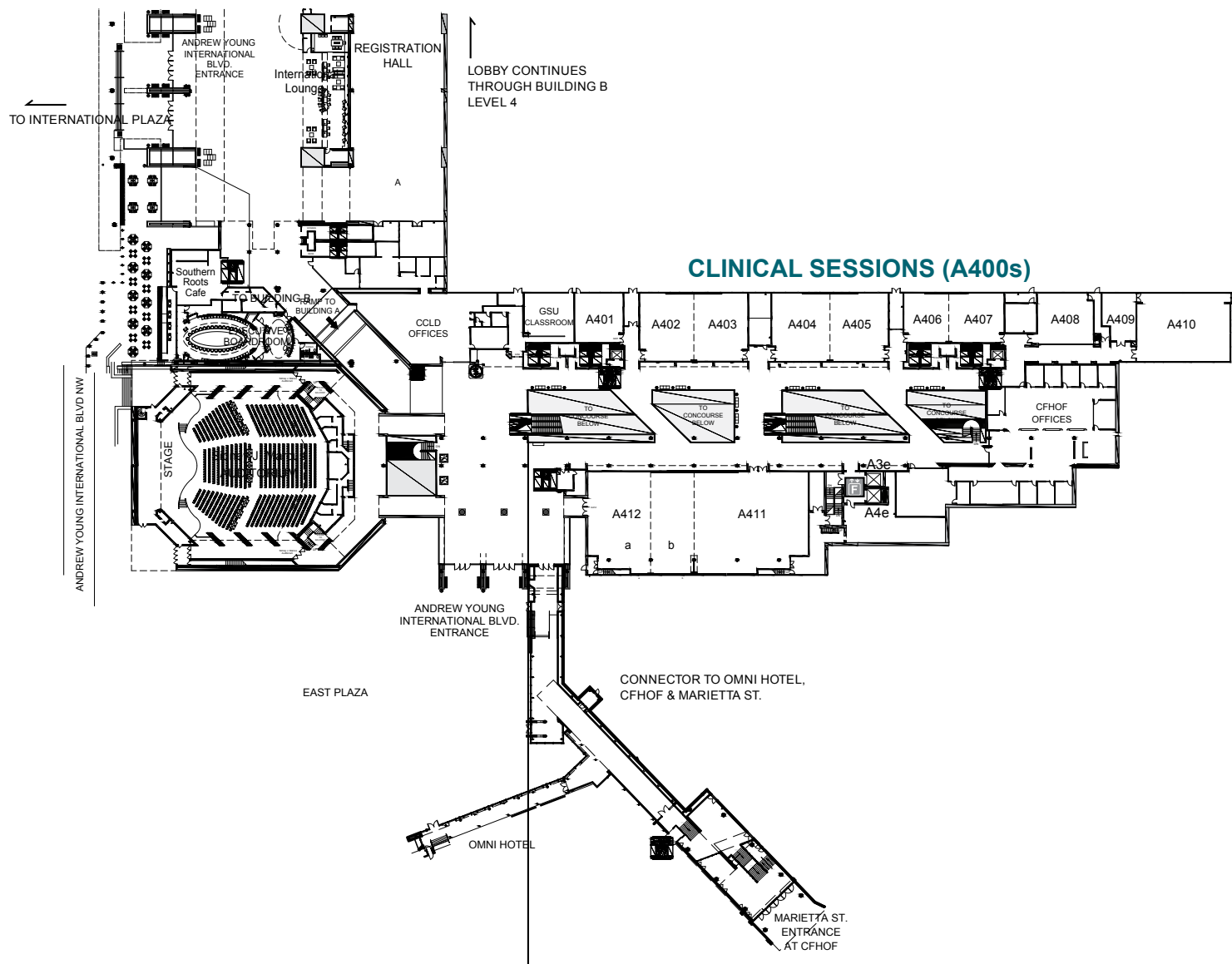
BUILDING A LEVEL 1



BUILDING A LEVEL 3

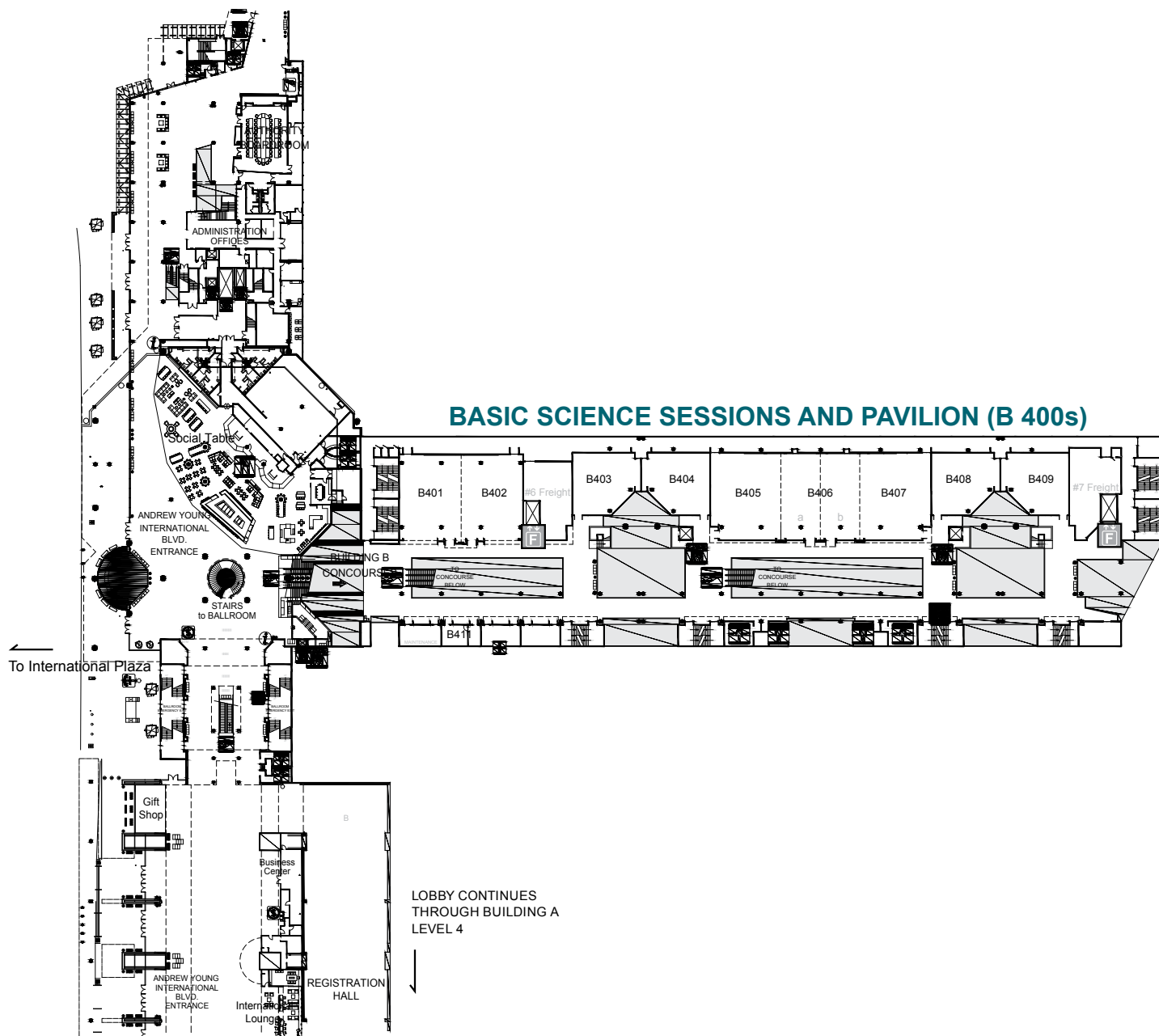


BUILDING A LEVEL 4



GEORGIA WORLD CONGRESS CENTER FLOOR PLANS (CONTINUED)

BUILDING B LEVEL 4





DOWNLOAD THE **ENDO2022** MEETING APP

**AROUND-THE-CLOCK ACCESS TO MEETING INFORMATION,
MAPS, NETWORKING OPPORTUNITIES, AND MORE.**



FEATURES INCLUDE:

- Interactive meeting program and course schedules
- Customizable calendar and itinerary builder
- Exhibitor listing with booth map
- Networking opportunities with colleagues
- Meeting alerts

WAYS TO DOWNLOAD

- If you have a QR code reader on your mobile device, scan the code at the right and the code will take you to instructions for downloading the ENDO 2022 Meeting App native to your device.
- You can also search “Endocrine Society Meetings” in your Apple or Android app store.
- For more information, scan the QR code on the right or visit endocrine.org/endoapp. Mobile app itineraries are refreshed every hour.
- The ENDO 2022 Meeting App is compatible with iPhone and Android smartphones, as well as iPads.



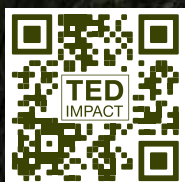
THE DANGER CAN BE HARD TO SEE. LOOK CLOSER.

For patients with Graves' disease (GD), Thyroid Eye Disease (TED) may be hiding in plain sight.^{1,2}

Up to 50% of patients with GD may develop TED, a separate and distinct disease which can progress if left untreated. Look out for the early signs and symptoms³⁻⁷:

- **Proptosis¹**
- **Sensitivity to light¹²**
- **Diplopia³**
- **Grittiness⁸⁻¹¹**
- **Dry eyes⁸⁻¹¹**
- **Pain or pressure behind the eyes^{1,13}**

If you identify new or changing signs or symptoms, consult with an eye doctor who specializes in TED right away.^{1,14}



Visit [TEDImpact.com](https://tedimpact.com) to find a TED specialist or contact a Horizon Representative at 1-855-950-2076.

References: 1. Barrio-Barrio J, Sabater AL, Bonet-Farriol E, Velázquez-Villoria Á, Galofré JC. Graves' ophthalmopathy: VISA versus EUGOGO classification, assessment, and management. *J Ophthalmol*. 2015;2015:249125. 2. Bothun ED, Scheurer RA, Harrison AR, Lee MS. Update on thyroid eye disease and management. *Clin Ophthalmol*. 2009;3:543-551. 3. Bahn RS. Graves' ophthalmopathy. *N Engl J Med*. 2010;362(8):726-738. 4. Bartalena L, Krassas GE, Wiersinga W, et al. Efficacy and safety of three different cumulative doses of intravenous methylprednisolone for moderate to severe and active Graves' orbitopathy. *J Clin Endocrinol Metab*. 2012;97(12):4454-4463. 5. Patel A, Yang H, Douglas RS. A new era in the treatment of thyroid eye disease. *Am J Ophthalmol*. 2019;208:281-288. 6. Ponto KA, Pitz S, Pfeiffer N, Hommel G, Weber MM, Kahaly GJ. Quality of life and occupational disability in endocrine orbitopathy. *Dtsch Arztebl Int*. 2009;106(17):283-289. 7. Smith TJ, Kahaly GJ, Ezra DG, et al. Teprotumumab for thyroid-associated ophthalmopathy. *N Engl J Med*. 2017;376(18):1748-1761. 8. Bartley GB, Fatourehchi V, Kadrmas EF, et al. Long-term follow-up of Graves ophthalmopathy in an incidence cohort. *Ophthalmology*. 1996;103(6):958-962. 9. Terwee C, Wakelkamp I, Tan S, Dekker F, Prummel MF, Wiersinga W. Long-term effects of Graves' ophthalmopathy on health-related quality of life. *Eur J Endocrinol*. 2002;146(6):751-757. 10. Bartley GB. The epidemiologic characteristics and clinical course of ophthalmopathy associated with autoimmune thyroid disease in Olmsted County, Minnesota. *Trans Am Ophthalmol Soc*. 1994;92:477-588. 11. Estcourt S, Hickey J, Perros P, Dayan C, Vaidya B. The patient experience of services for thyroid eye disease in the United Kingdom: results of a nationwide survey. *Eur J Endocrinol*. 2009;161(3):483-487. doi:10.1530/EJE-09-0383. 12. Dolman PJ. Grading severity and activity in thyroid eye disease. *Ophthalmic Plast Reconstr Surg*. 2018;34(4S suppl):S34-S40. 13. Phelps PO, Williams K. Thyroid eye disease for the primary care physician. *Dis Mon*. 2014;60(6):292-298. 14. Ross DS, Burch HB, Cooper DS, et al. 2016 American Thyroid Association guidelines for diagnosis and management of hyperthyroidism and other causes of thyrotoxicosis. *Thyroid*. 2016;26(10):1343-1421.